

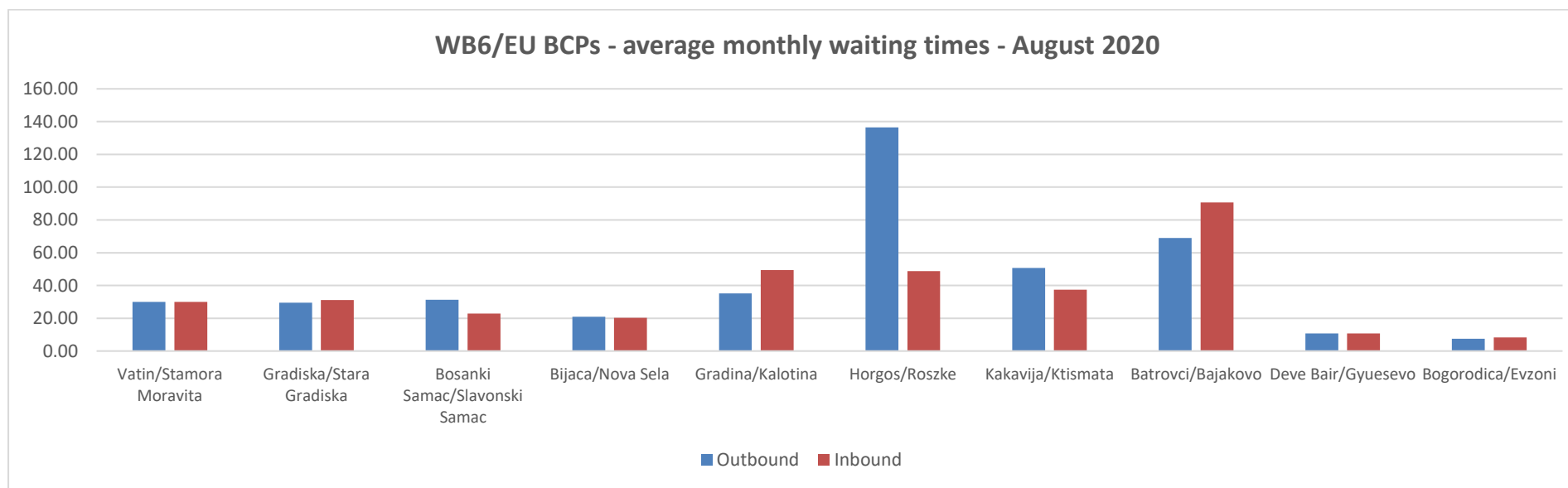
Monitoring waiting time at WB6 - EU borders (August 2020) Monthly trends and data

Since the adoption of the Green Corridors/Lanes Joint proposal prepared by TCT Permanent Secretariat and CEFTA Secretariat to facilitate the transport and trade of essential goods within the Western Balkans, TCT Permanent Secretariat have been monitoring the freight transport border waiting times in close cooperation with the relevant authorities and making use of all available information sources.

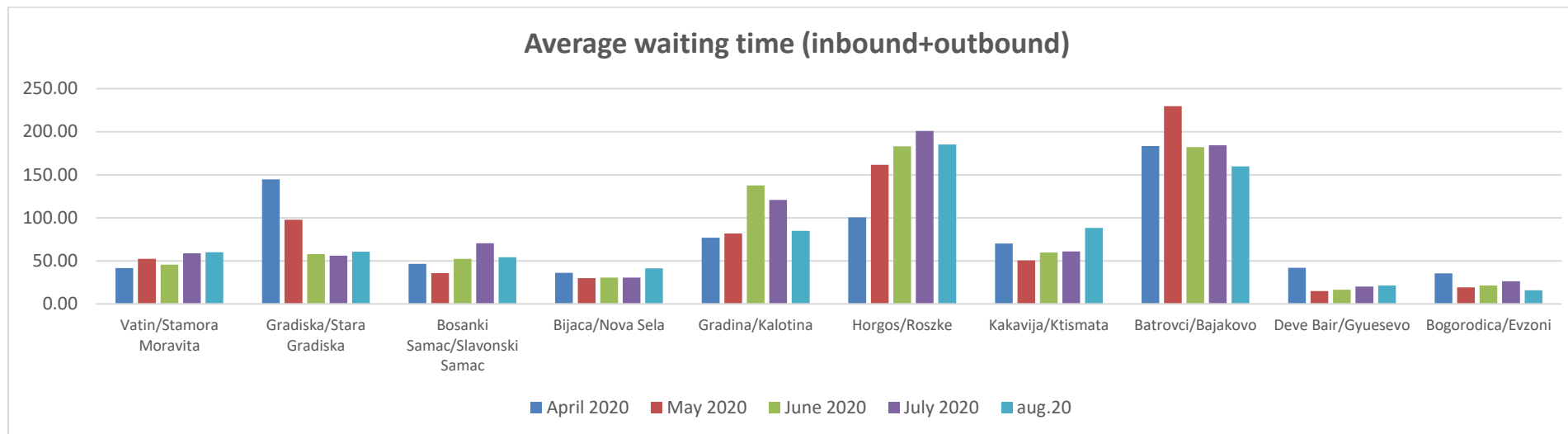
Daily monitoring has shown a stabilizing trend in August at Western Balkans 6/EU borders. With few exceptions only, the average waiting times have either remained stable or decreased, sometimes significantly.

An overall picture of the WB6/EU borders waiting times is being provided below.

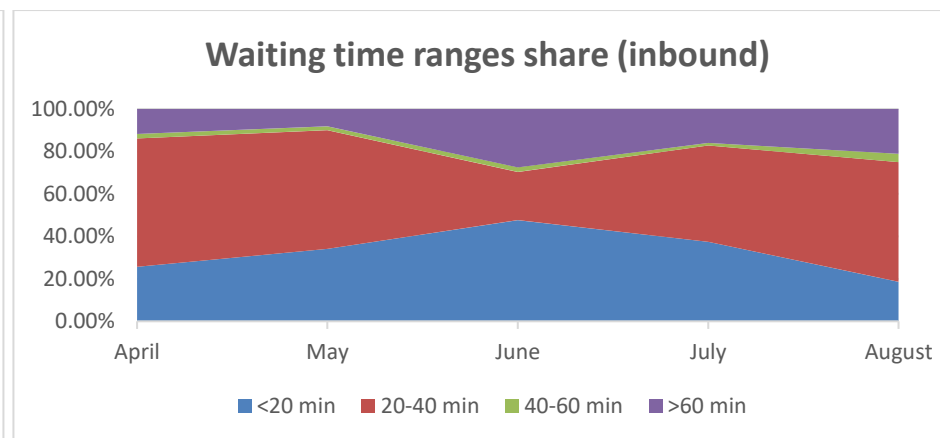
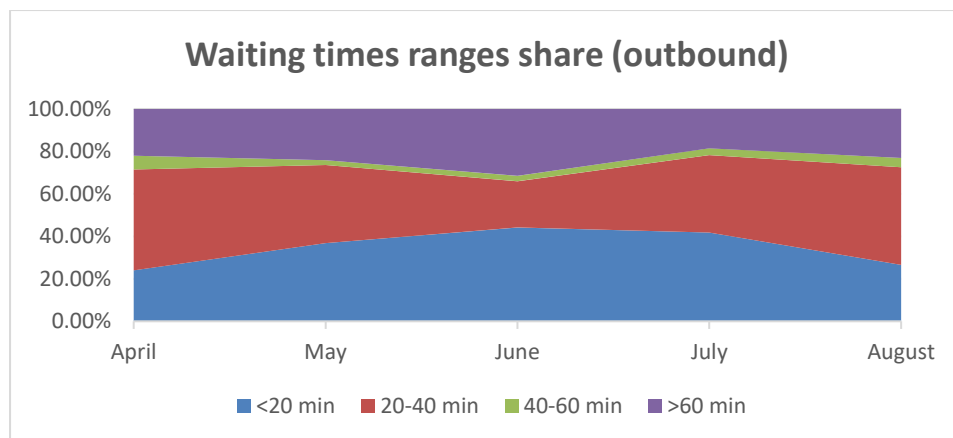
WB6/EU borders – Average Monthly Waiting Times (August 2020)



WB6/EU borders – Average Monthly Waiting Times (April to August 2020)



WB6 Internal borders – Inbound/Outbound waiting times distribution range (April to August 2020)



Despite the overall improvement recorded, the share of waiting times exceeding 1 h have slightly increased, while the ratio of waiting times below 20 minutes have kept decreasing (this latter trend being, however, rather explainable through methodological/data reporting issues).

Horgos/Roszke and Batrovci/Bajakovo have remained the most crowded Border Crossing Point in the region. However, both have experienced an improvement during the month of August (in Horgos, such improvement was largely determined by a notable decrease in waiting times between the 17th and the 21st of August). After the June peak, Gradina/Kalotina has also seen significantly improved waiting times for the second month in a row which makes it the summer's best performer. After a continuous increase from May to July, Bosanski Samac/Slavonski Samac has also got better in August, while the situation in Gradiska/Stara Gradiska has remained largely stable. Longer waiting times have been recorded in Kakavija/Ktismata, partly because of methodological/reporting issues (on the inbound direction). No significant variations have been recorded for the other BCPs under monitoring.

Individual Border Crossing Points monthly performance

