

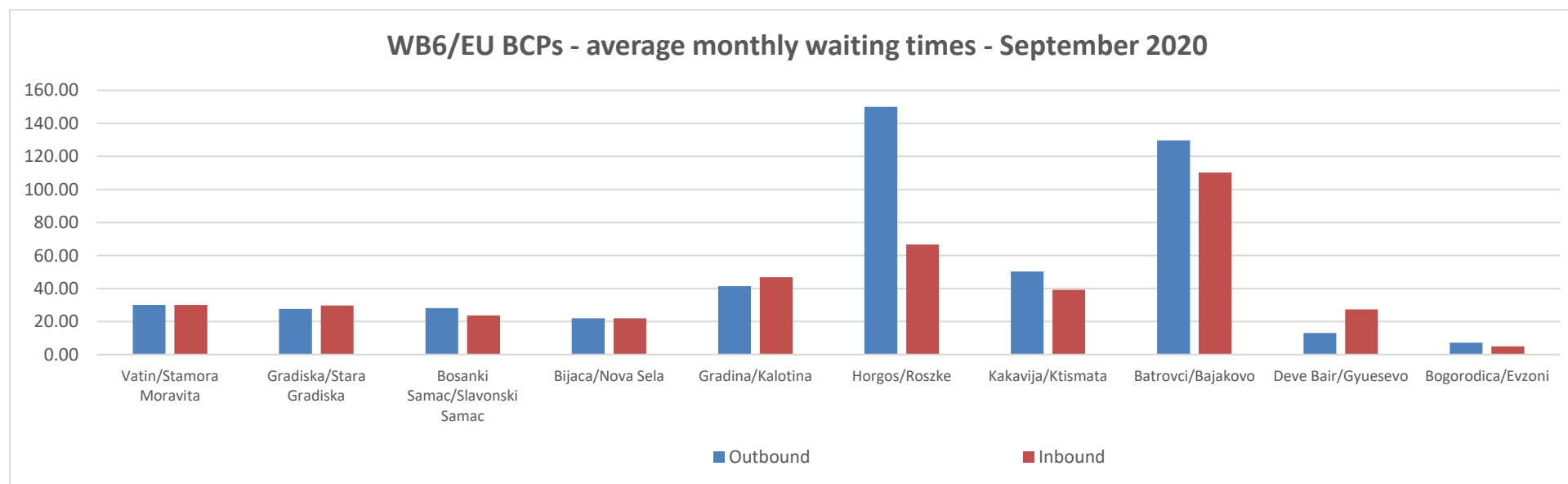
## Monitoring waiting time at WB6 - EU borders (September 2020) Monthly trends and data

Since the adoption of the Green Corridors/Lanes Joint proposal prepared by TCT Permanent Secretariat and CEFTA Secretariat to facilitate the transport and trade of essential goods within the Western Balkans, TCT Permanent Secretariat have been monitoring the freight transport border waiting times in close cooperation with the relevant authorities and making use of all available information sources.

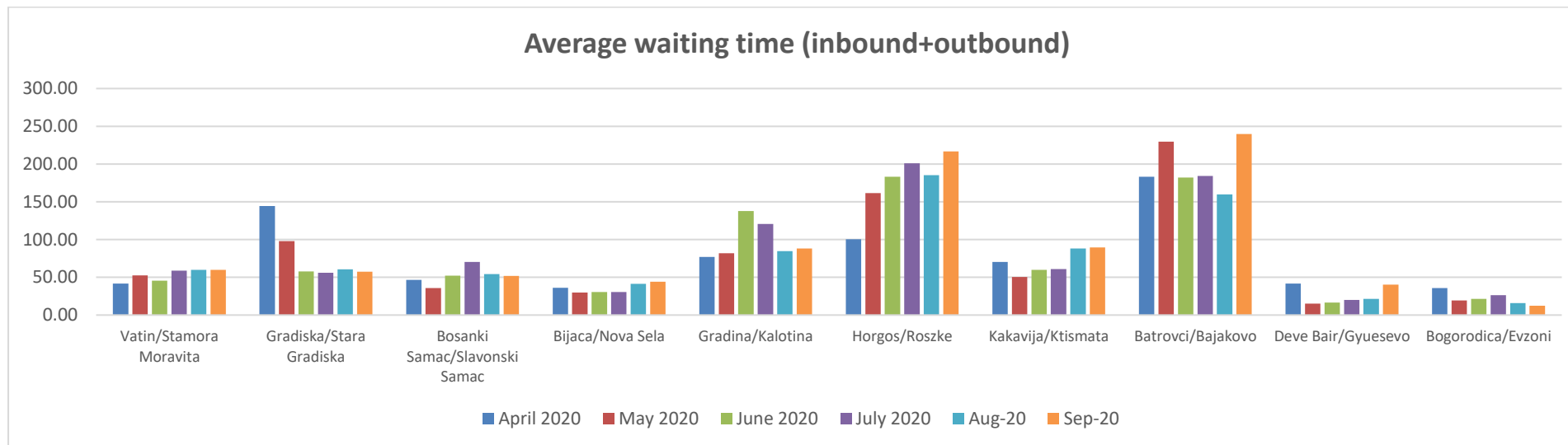
The autumn has brought increasing waiting times at the most crowded Border Crossing Points between Western Balkans and the EU, while the situation has remained relatively in rest.

An overall picture of the WB6/EU borders waiting times is being provided below.

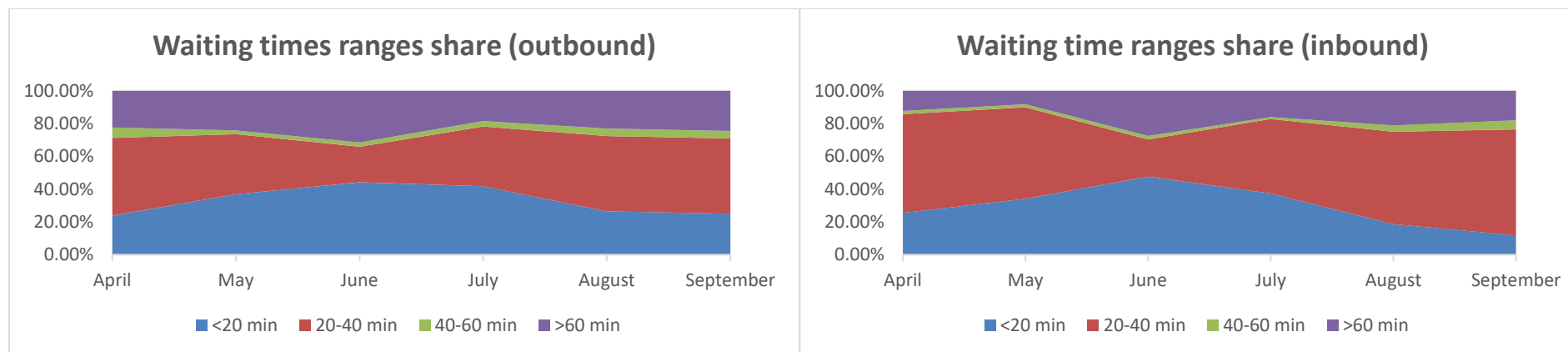
### WB6/EU borders – Average Monthly Waiting Times (September 2020)



### WB6/EU borders – Average Monthly Waiting Times (April to September 2020)



### WB6 Internal borders – Inbound/Outbound waiting times distribution range (April to September 2020)



The ratio of waiting times below 20 minutes have kept decreasing but the same was recorded for those exceeding one hour, which seems to be confirming an overall stabilizing trend with the most consistent share of waiting times lying within the 20 to 40 minutes interval.

Horgos/Roszke and Batrovci/Bajakovo have remained the most crowded Border Crossing Point in the region, with both having experienced a significant increase in waiting time. For Horgos/Roszke, September 2020 has been the worse since April for both directions. Same happened in Batrovci for the HR-SRB direction, while for the opposite route September was the second most crowded month after May. Both cases could be linked with an increase of economic activities and transport after the summer break, but traffic data are still awaited to confirm such explanation.

After the June peak, Gradina/Kalotina has experienced decreasing waiting times in late summer while September seems to have marked a stabilizing trend. Gradiska/Stara Gradiska and Bosanki Samac/Slavonski Samac have also remained relatively stable. On the other side, Kakavija/Ktismata has recorded increasing waiting times for the second month in a row. No significant variations have been recorded for the other BCPs under monitoring.

### Individual Border Crossing Points monthly performance

