

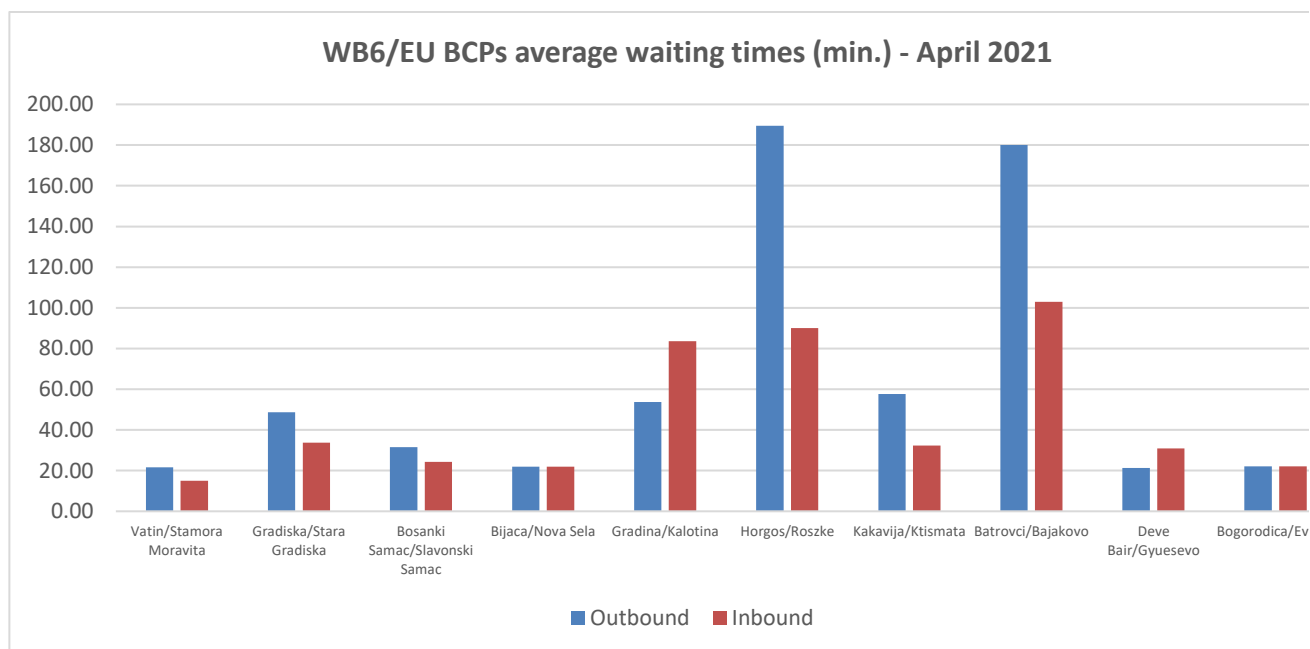
## Monitoring waiting time at WB6 - EU borders (April 2021)

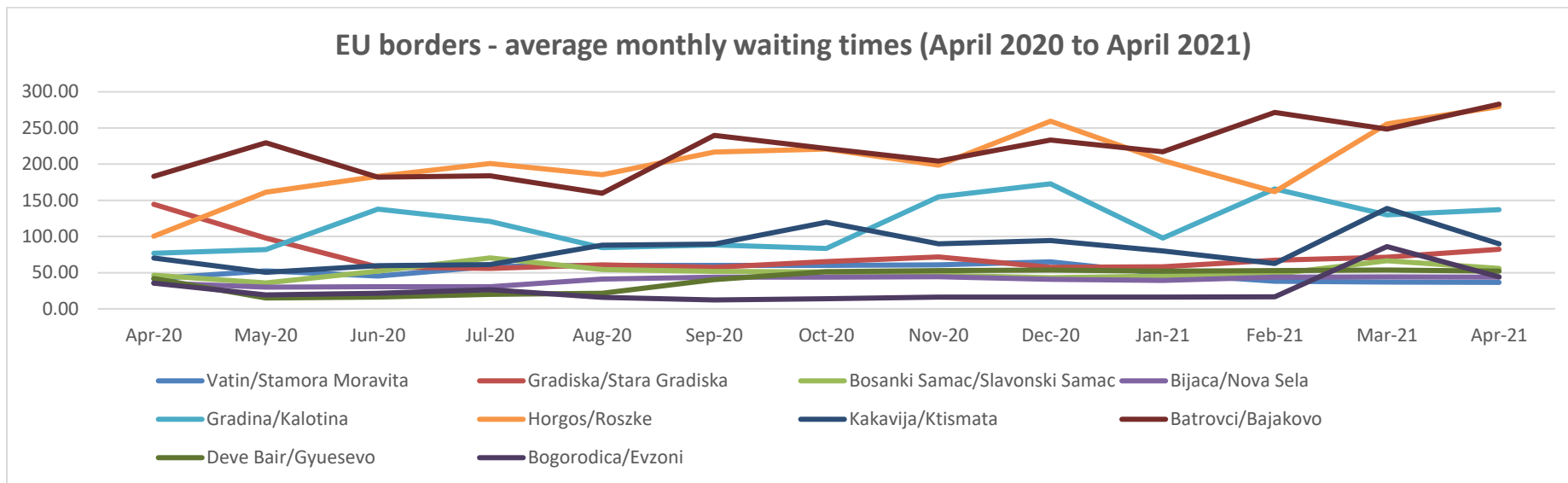
### Consolidated monthly data and trends

Since the adoption of the Green Corridors/Lanes Joint proposal prepared by TCT Permanent Secretariat and CEFTA Secretariat to facilitate the transport and trade of essential goods within the Western Balkans, TCT Permanent Secretariat have been monitoring the freight transport border waiting times in close cooperation with the relevant authorities and making use of all available information sources.

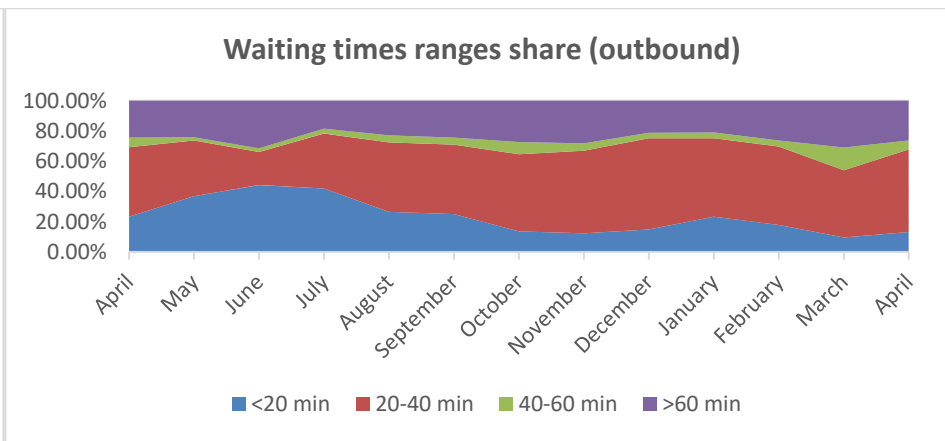
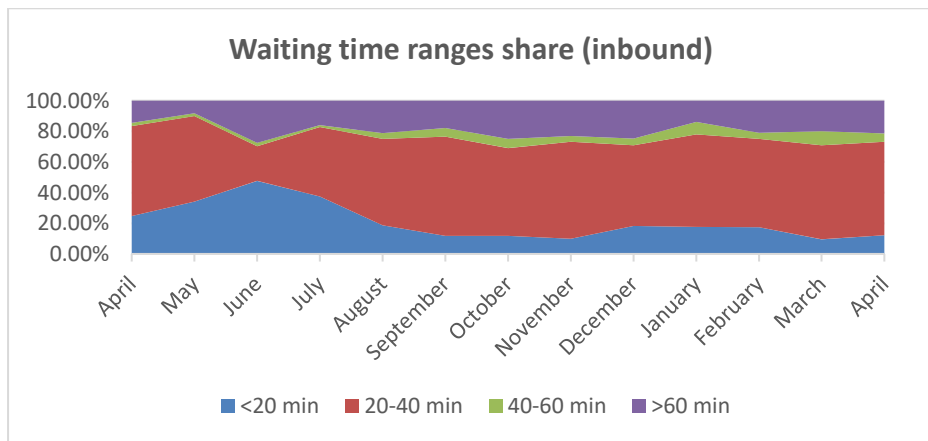
An overall picture of the WB6/EU borders waiting times during the month of April is being provided below.

| Border Crossing Point         | Average waiting time (April 2021) |         |
|-------------------------------|-----------------------------------|---------|
|                               | Outbound                          | Inbound |
| Vatin/Stamora Moravita        | 21.59                             | 15.00   |
| Gradiska/Stara Gradiska       | 48.68                             | 33.68   |
| Bosanki Samac/Slavonski Samac | 31.59                             | 24.32   |
| Bijaca/Nova Sela              | 22.00                             | 22.00   |
| Gradina/Kalotina              | 53.64                             | 83.64   |
| Horgos/Roszke                 | 189.55                            | 90.00   |
| Kakavija/Ktismata             | 57.64                             | 32.27   |
| Batrovci/Bajakovo             | 180.00                            | 102.95  |
| Deve Bair/Gyuesevo            | 21.36                             | 30.91   |
| Bogorodica/Evzoni             | 22.05                             | 22.05   |



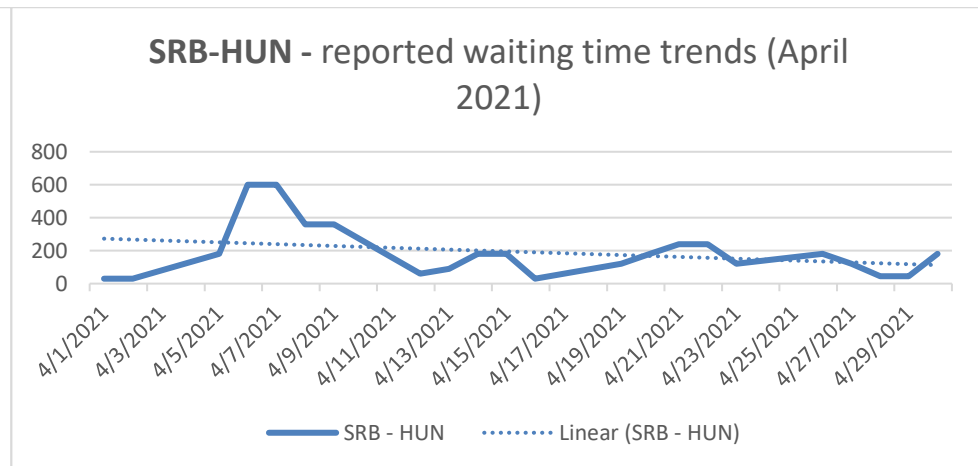
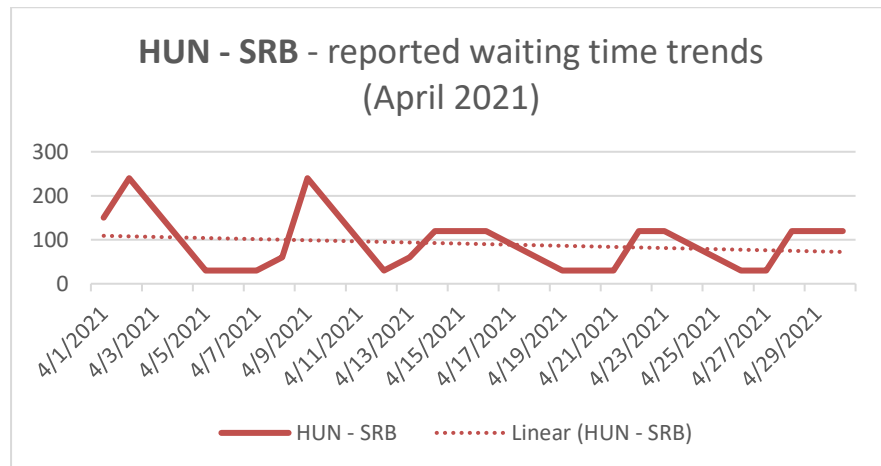
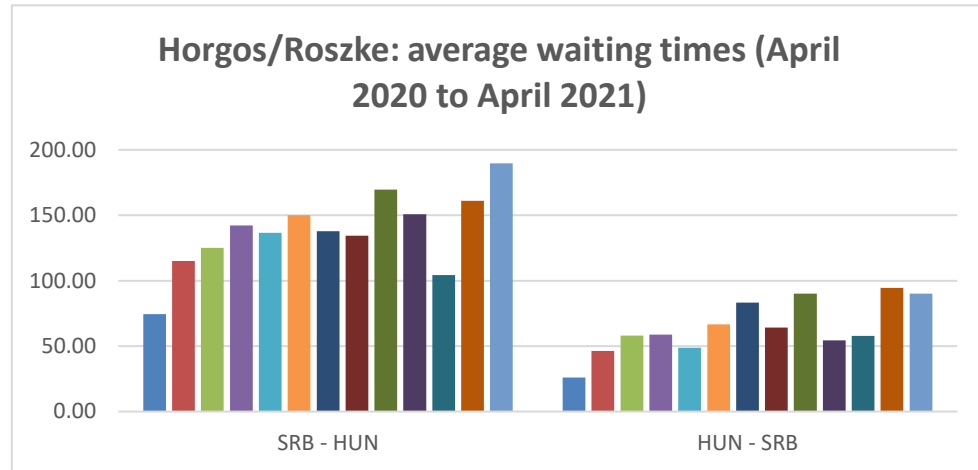


**WB6 Internal borders – Inbound/Outbound waiting times distribution range (April 2020 to April 2021)**

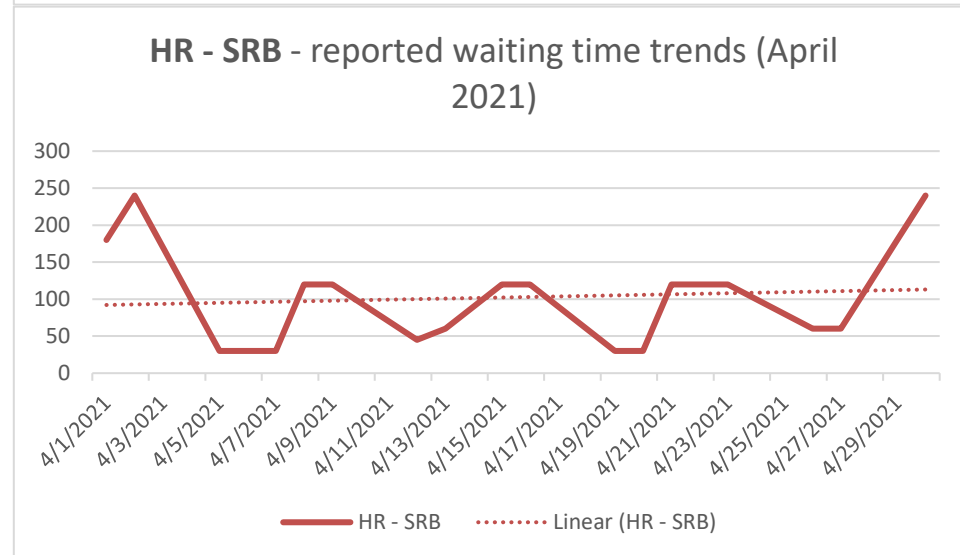
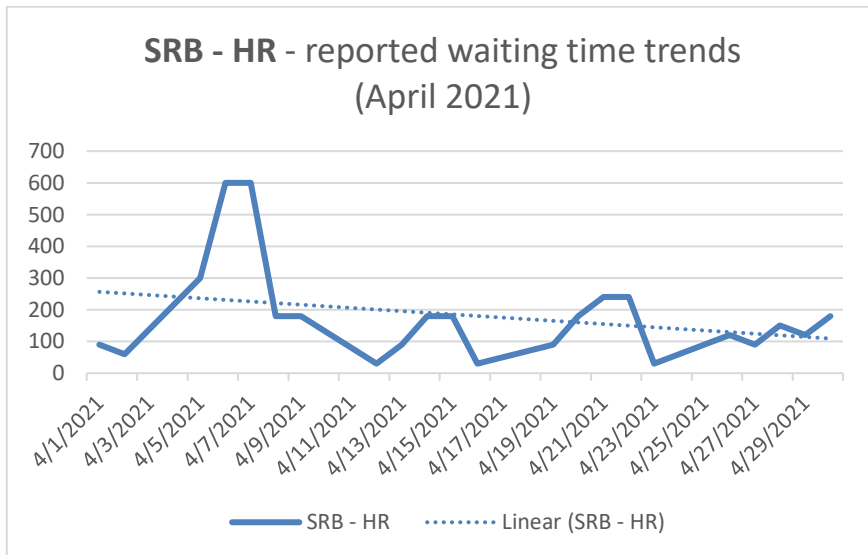
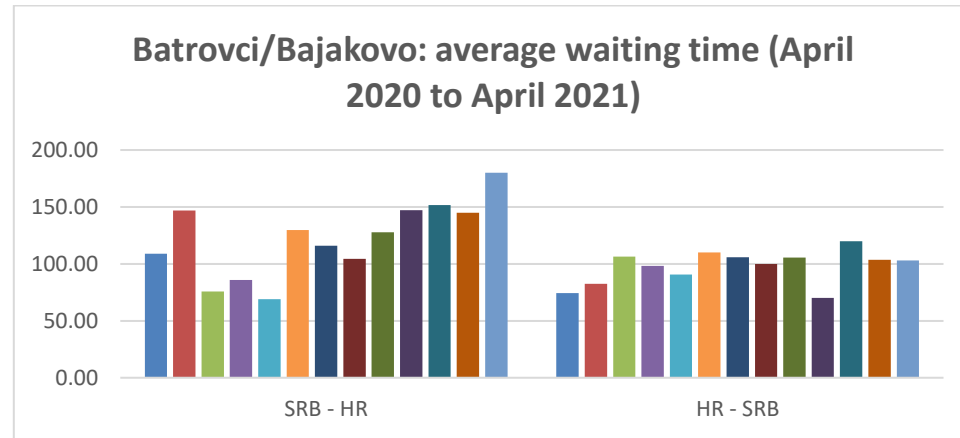


Additional details on individual Border Crossing Points are being also provided below.

New record high was hit in Horgos/Roszke on the outbound direction (SRB-HUN), after three months of consecutive idle time increase. On HUN-SRB direction, waiting times remained also high, coming close to the record in March. The week from 5 to 9 April was particularly intense, with waiting times reaching 10 h for two days in a row on SRB-HUN direction. Peak values on the opposite side were seen in early and mid-April. Because of traffic and waiting times peaks in early April, the overall monthly trend on both directions was decreasing.

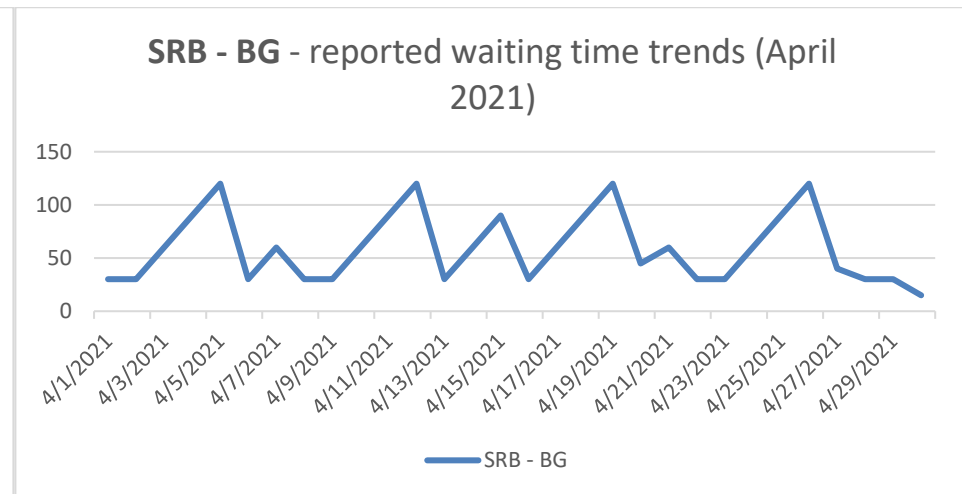
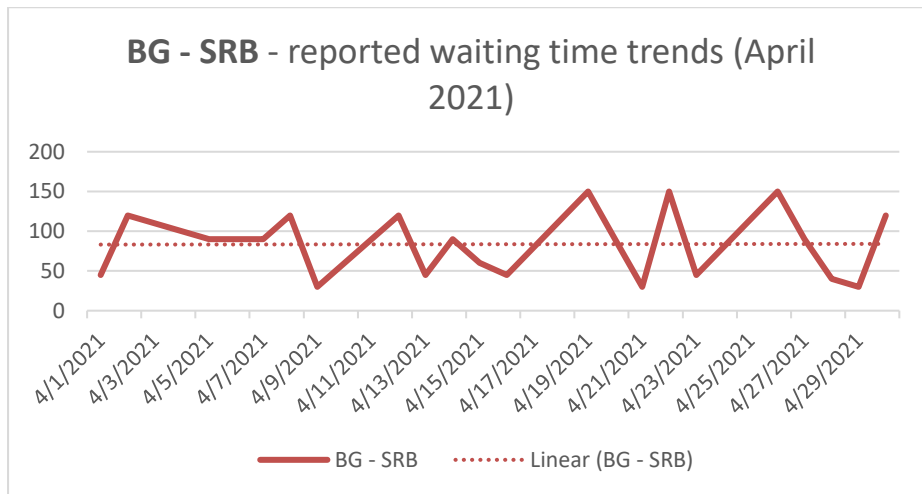
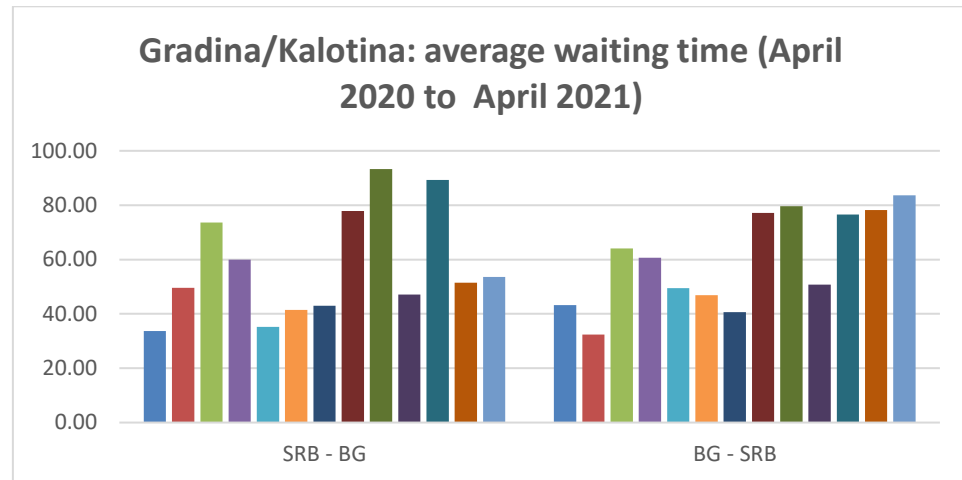


New monthly record was also set in Batrovci-Bajakovo on the outbound direction (SRB-HR). Just like in the case of Horgos/Roszke, this was mainly caused by unusually long waiting times being recorded in the week from 5 to 9 April (up to 10 h). On HR – SRB direction, the average waiting time slightly decreased for the third month in a row but remained nevertheless above median. Inbound traffic peaks were noted in early and late April, with up to 4 h waiting for getting from HR to SRB.



Waiting times remained low in Gradina/Kalotina on the SRB-BG direction, despite a slight increase from previous month. On the outbound direction (BG-SRB), the fourth month of consecutive increase brought new record high, close to 1.5 h.

Weekly variations remained also high, which tend to be a specific feature of this Border Crossing Point.



Situation in the other BCPs under monitoring where the risk of prolonged waiting times is higher is presented in the graphics below. Gradiska/Stara Gradiska recorded the longest average waiting time in the post Covid19-related restrictions period, while Kakavija/Ktismata returned to normal after the March peak.

