

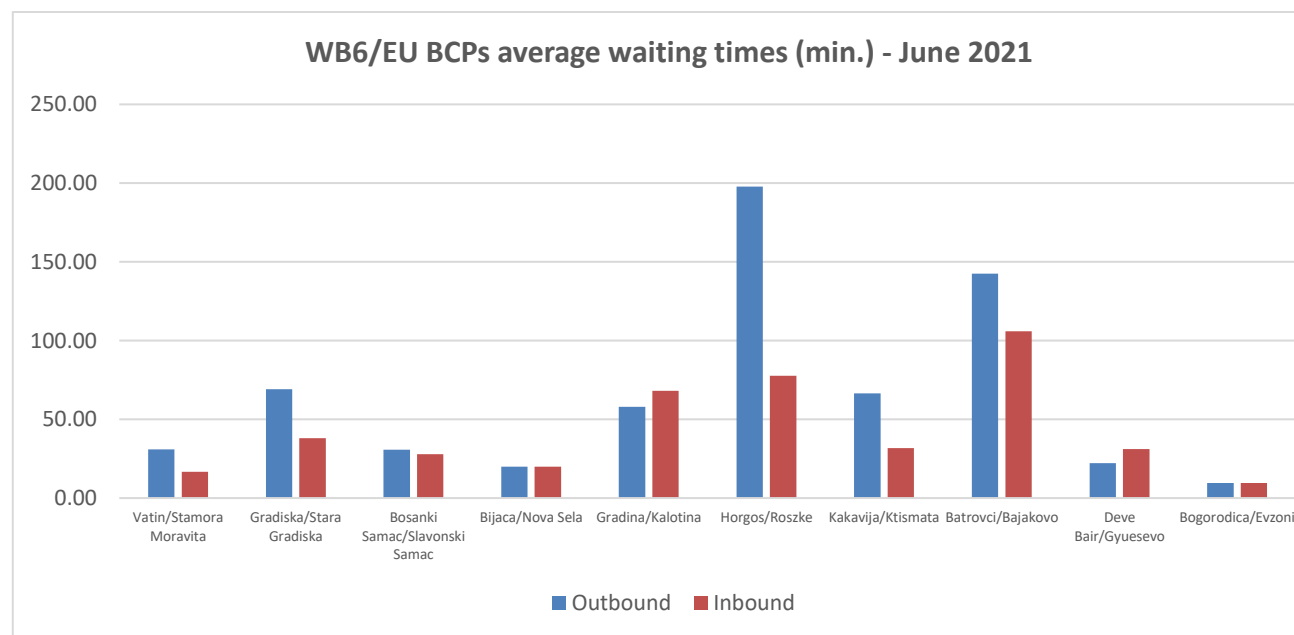
## Monitoring waiting time at WB6 - EU borders (June 2021)

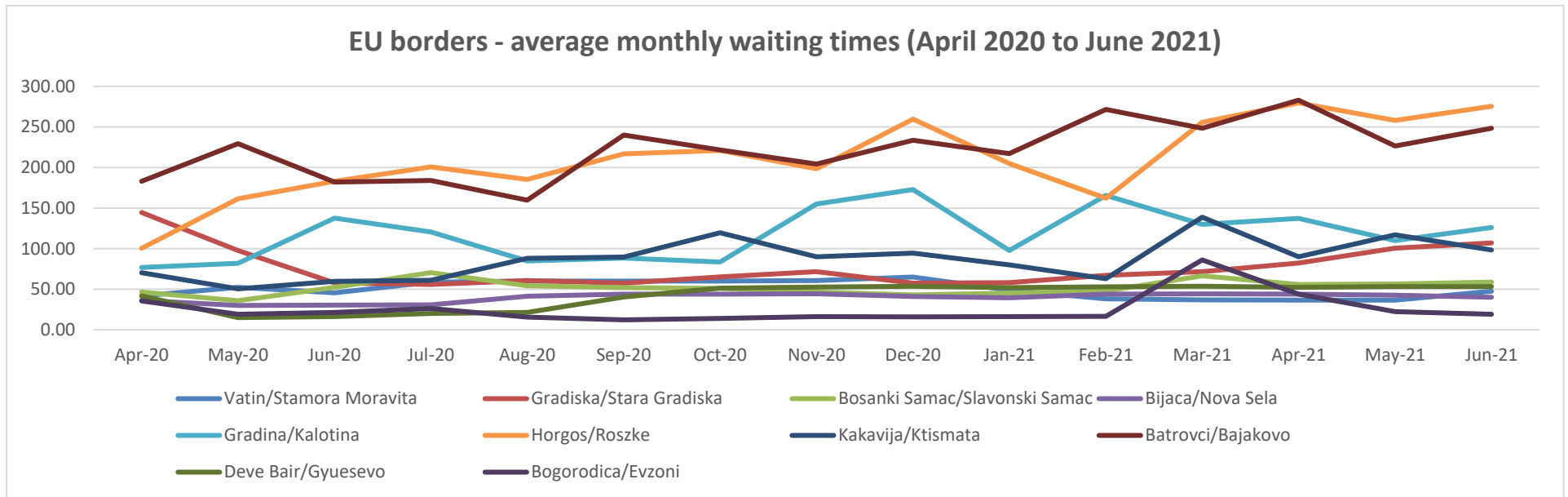
### Consolidated monthly data and trends

Since the adoption of the Green Corridors/Lanes Joint proposal prepared by TCT Permanent Secretariat and CEFTA Secretariat to facilitate the transport and trade of essential goods within the Western Balkans, TCT Permanent Secretariat have been monitoring the freight transport border waiting times in close cooperation with the relevant authorities and making use of all available information sources.

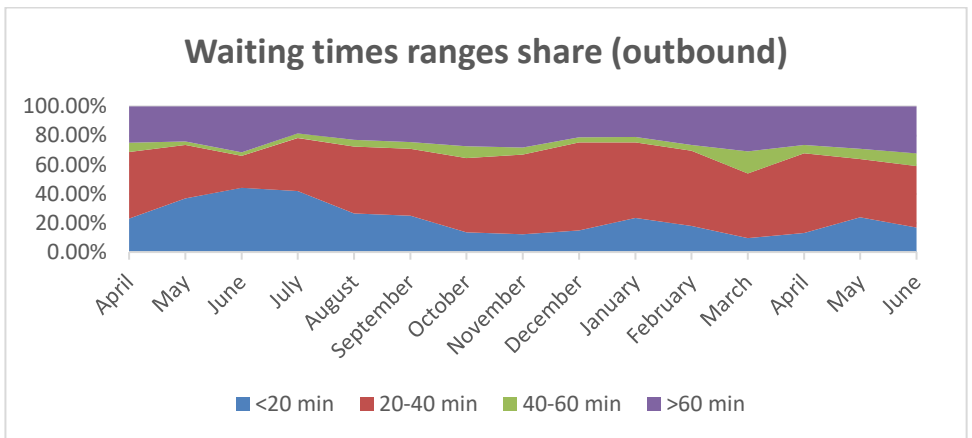
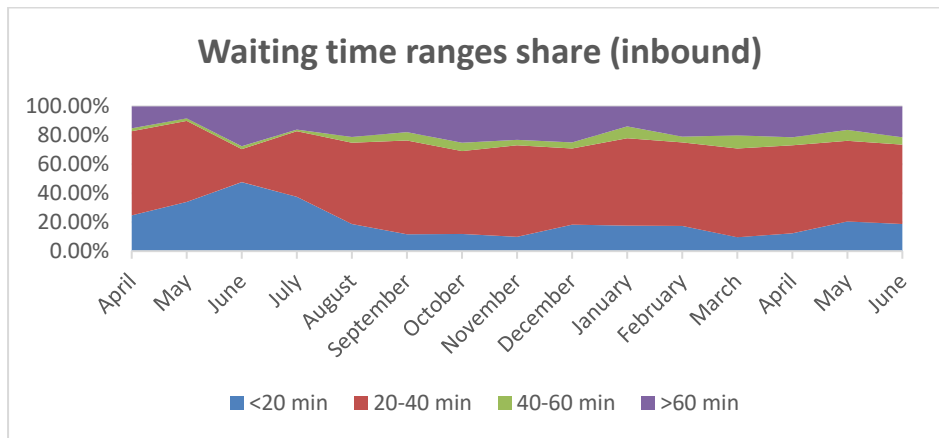
An overall picture of the WB6/EU borders waiting times during the month of June is being provided below.

Border Crossing Point	Average waiting time (June 2021)	
	Outbound	Inbound
Vatin/Stamora Moravita	30.91	16.59
Gradiska/Stara Gradiska	69.09	37.95
Bosanki Samac/Slavonski Samac	30.68	27.95
Bijaca/Nova Sela	20.00	20.00
Gradina/Kalotina	57.95	68.18
Horgos/Roszke	197.73	77.73
Kakavija/Ktismata	66.41	31.82
Batrovci/Bajakovo	142.50	105.91
Deve Bair/Gyuesevo	22.27	31.14
Bogorodica/Evzoni	9.55	9.55



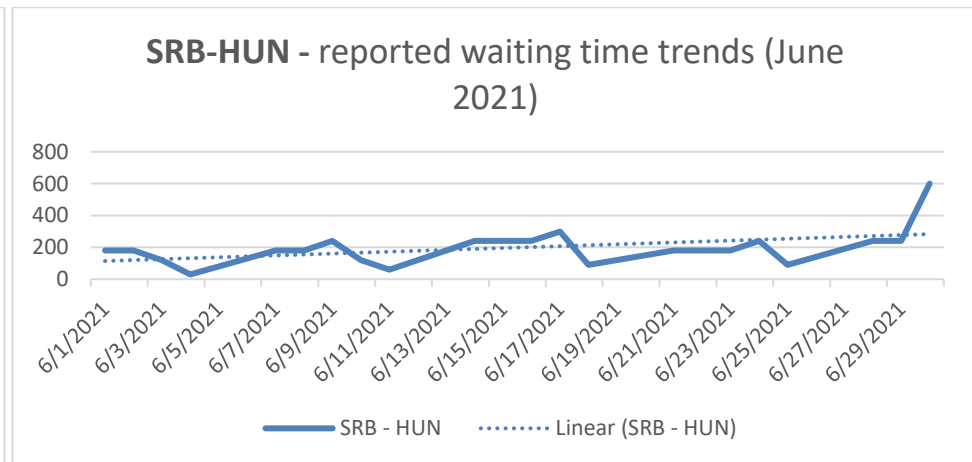
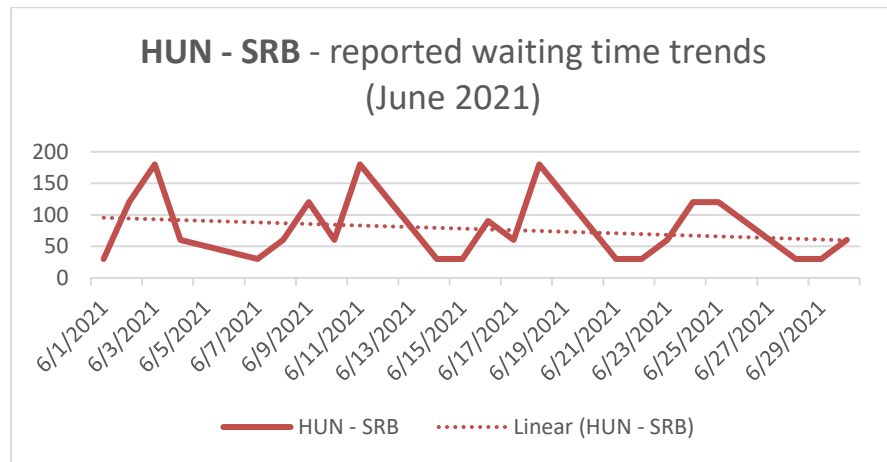
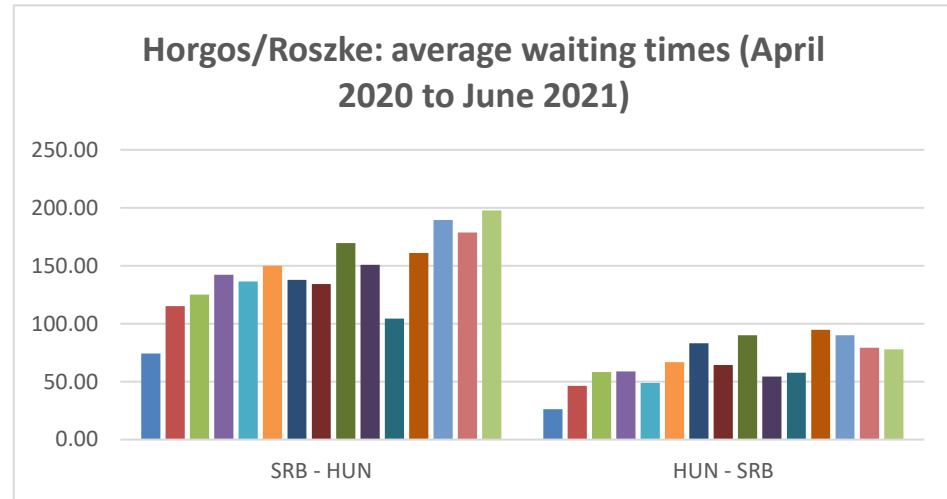


**WB6 – EU borders – Inbound/Outbound waiting times distribution range (April 2020 to June 2021)**



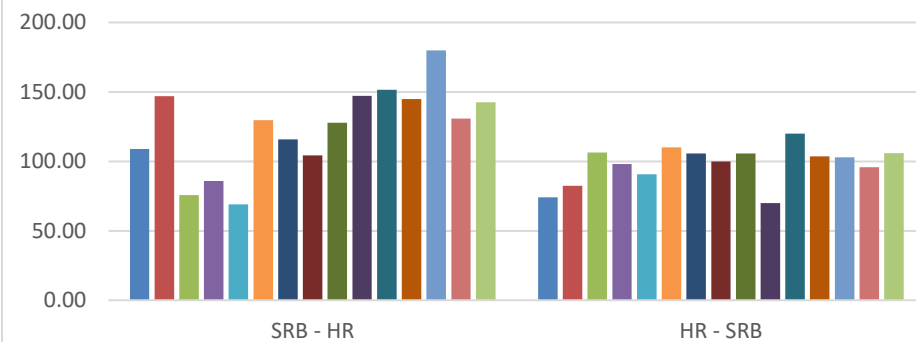
Additional details on individual Border Crossing Points are being also provided below.

Average waiting time on SRB-HUN direction hit new record high, coming close to 200 minutes threshold. On HUN-SRB, direction, however, idle times decreased for the third month in a row. Following the usual trend, peak values on HUN-SRB direction were registered just before weekends, while on SRB-HUN direction the peak values distribution was more uniformly spread over the week. On SRB-Hun direction the monthly trend has remained on an increasing pace (mainly because of the record high values registered at the end of June). On the opposite side, the trendline was moving downward, due to decreasing Friday congestion just before the end of the month.

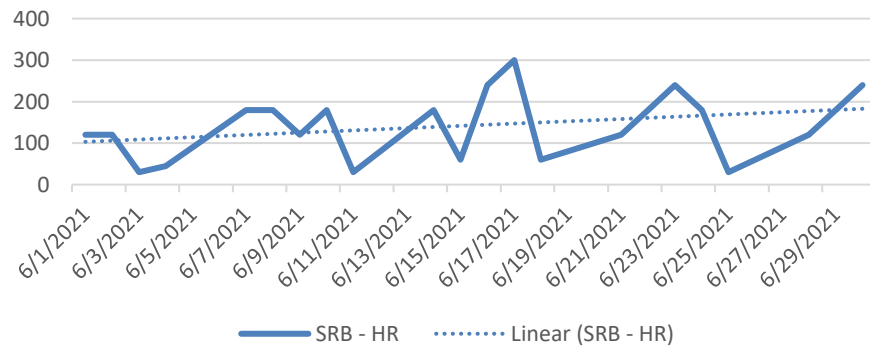


As compared with previous month, waiting times increased slightly in June on both directions. Trendline has been moving upwards in SRB-HR and downwards on HR-SRB direction. The peak on SRB-HR direction was noted in mid-June, when waiting times reached 5 hours. On HR-SRB direction, the regular weekly trend was again confirmed with waiting times up to 4 hours being registered just before weekends.

**Batrovci/Bajakovo: average waiting time (April 2020 to June 2021)**



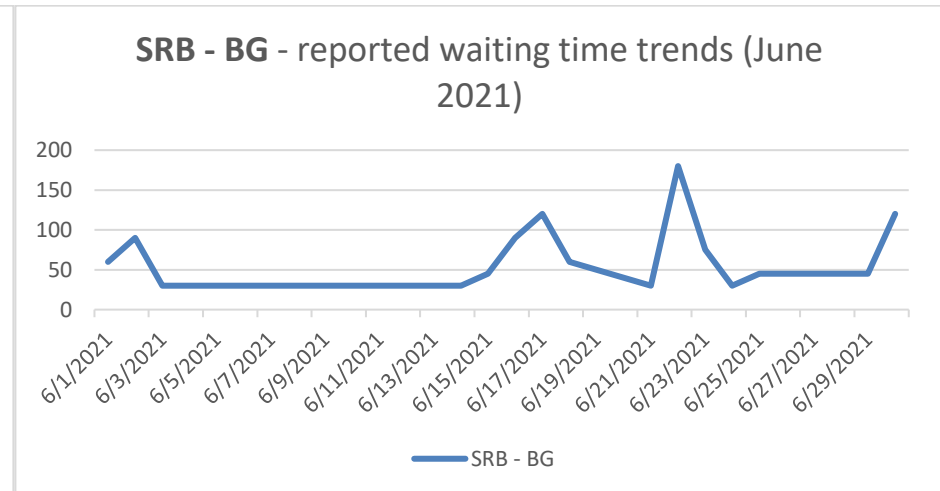
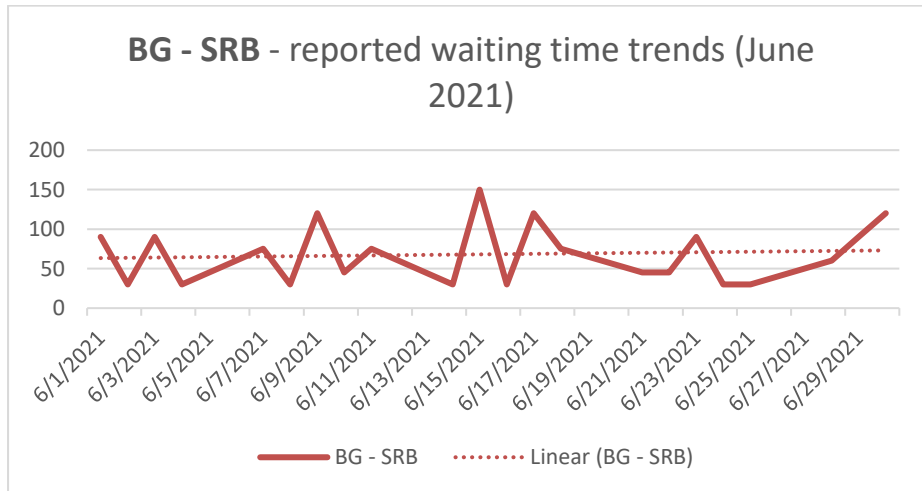
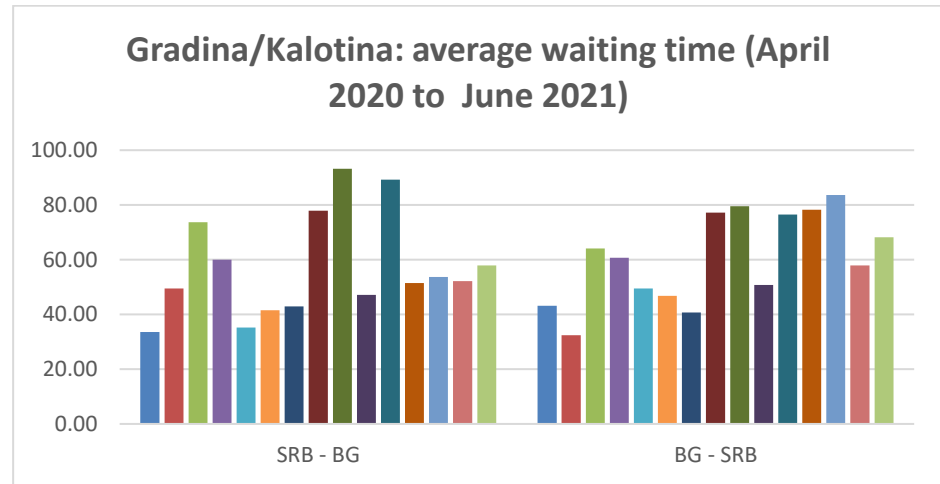
**SRB - HR - reported waiting time trends (June 2021)**



**HR - SRB - reported waiting time trends (June 2021)**



As compared with the previous month performance, June waiting times in Gradina/Kalotina increased on both directions. On SRB – BG direction, average waiting time was closed to 60 minutes, but significant variations could be noted between the first and the second part of the month, when peak values close to 3 hours were registered. High daily variations (between 30 minutes and 3 hours waiting) were also recorded on BG-SRB direction.



Situation in the other BCPs under monitoring where the risk of prolonged waiting times is higher is presented in the graphics below. **Situation in Gradiska/Stara Gradiska kept worsening for the third month in a row**, with average waiting times on BiH-HR direction rising again to the peak values recorded during the Covid19-related restrictions period.

