

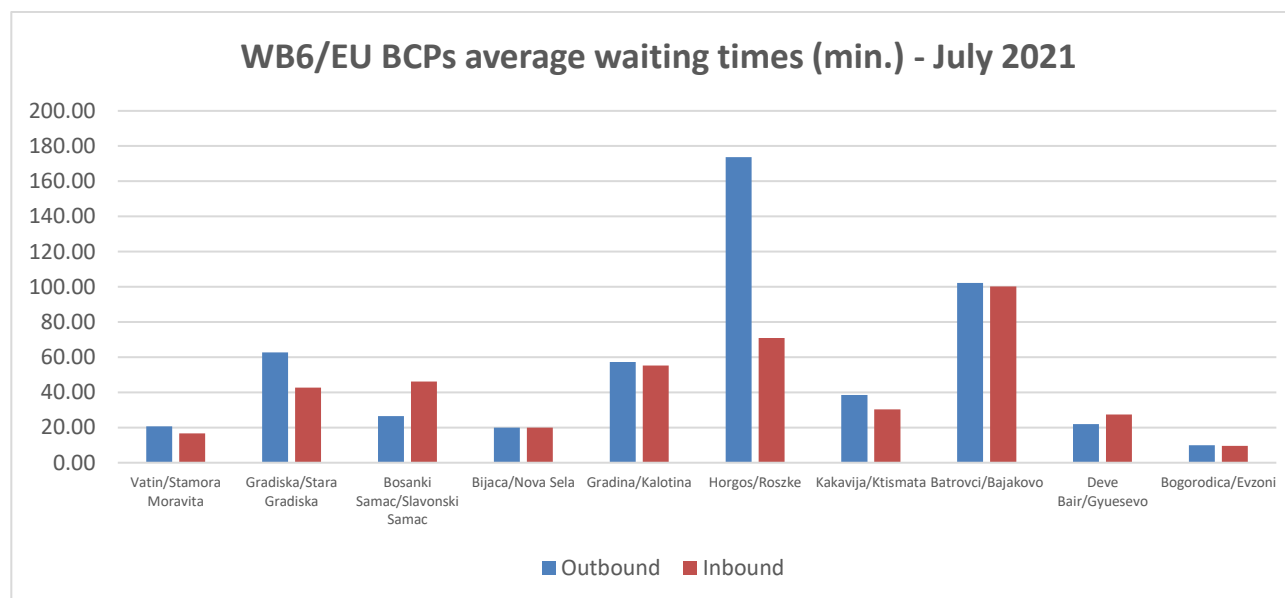
Monitoring waiting time at WB6 - EU borders (July 2021)

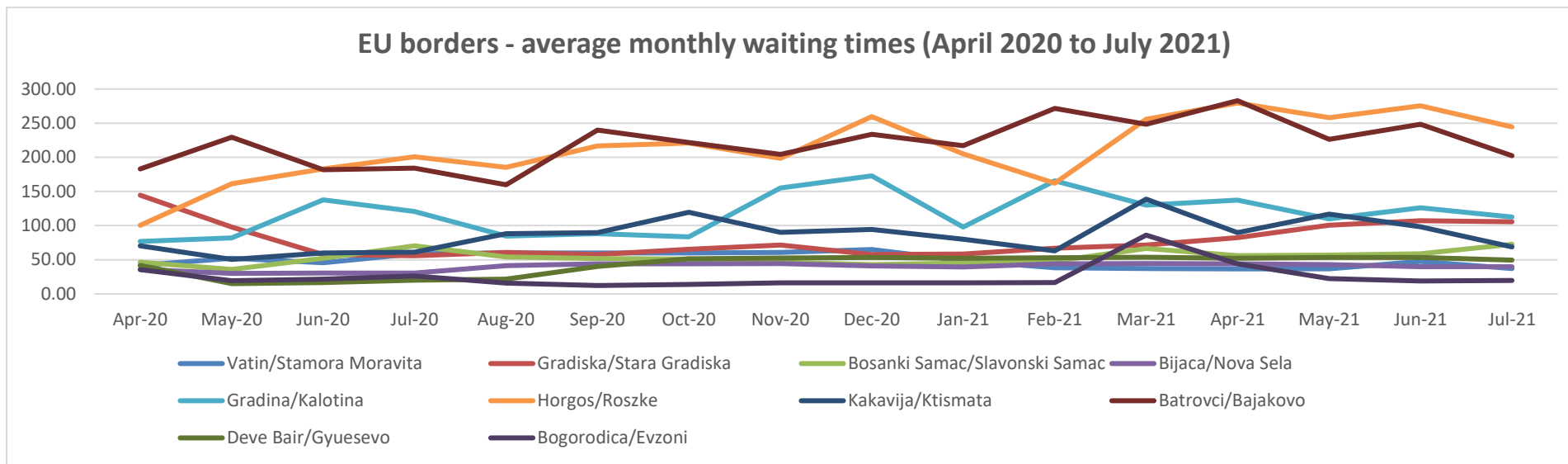
Consolidated monthly data and trends

Since the adoption of the Green Corridors/Lanes Joint proposal prepared by TCT Permanent Secretariat and CEFTA Secretariat to facilitate the transport and trade of essential goods within the Western Balkans, TCT Permanent Secretariat have been monitoring the freight transport border waiting times in close cooperation with the relevant authorities and making use of all available information sources.

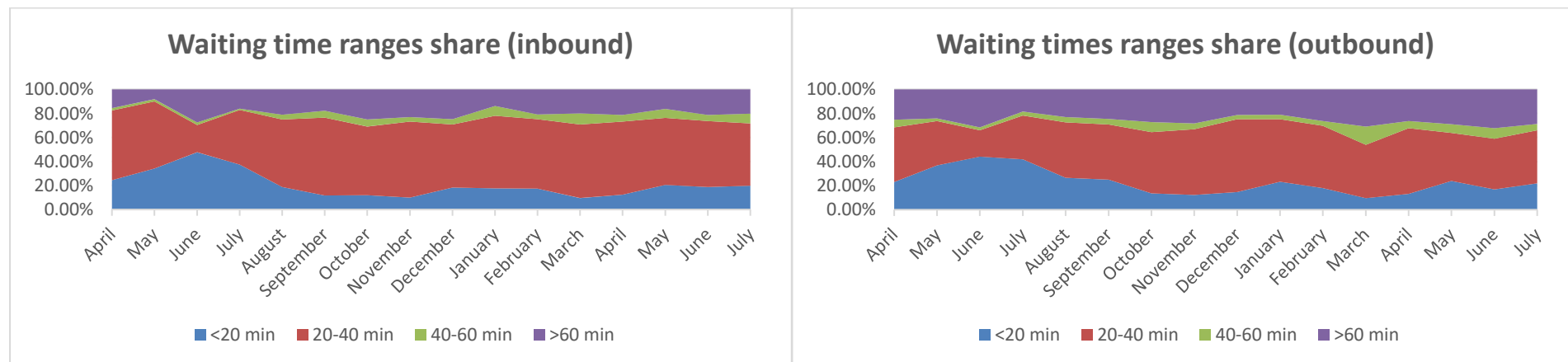
An overall picture of the WB6/EU borders waiting times during the month of July is being provided below.

Border Crossing Point	Average waiting time (July 2021)	
	Outbound	Inbound
Vatin/Stamora Moravita	20.68	16.59
Gradiska/Stara Gradiska	62.73	42.73
Bosanki Samac/Slavonski Samac	26.59	46.14
Bijaca/Nova Sela	20.00	20.00
Gradina/Kalotina	57.27	55.23
Horgos/Roszke	173.64	70.91
Kakavija/Ktismata	38.59	30.29
Batrovci/Bajakovo	102.27	100.23
Deve Bair/Gyuesevo	22.05	27.50
Bogorodica/Evzoni	10.00	9.55





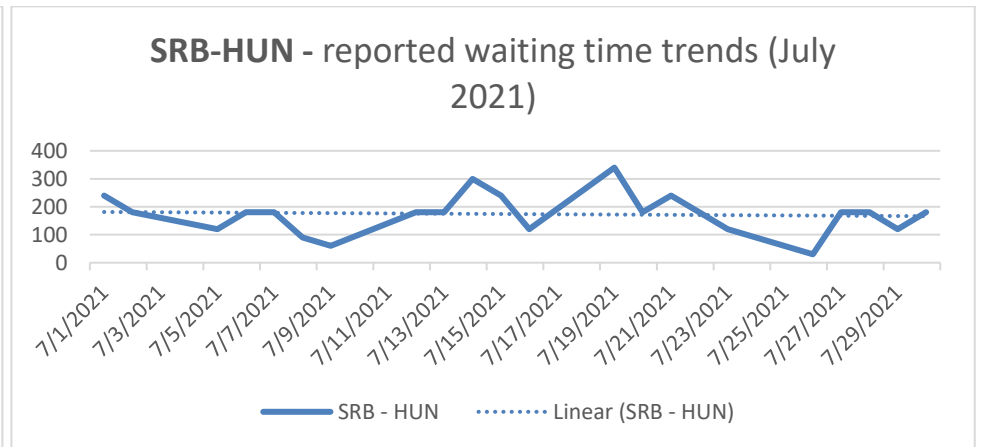
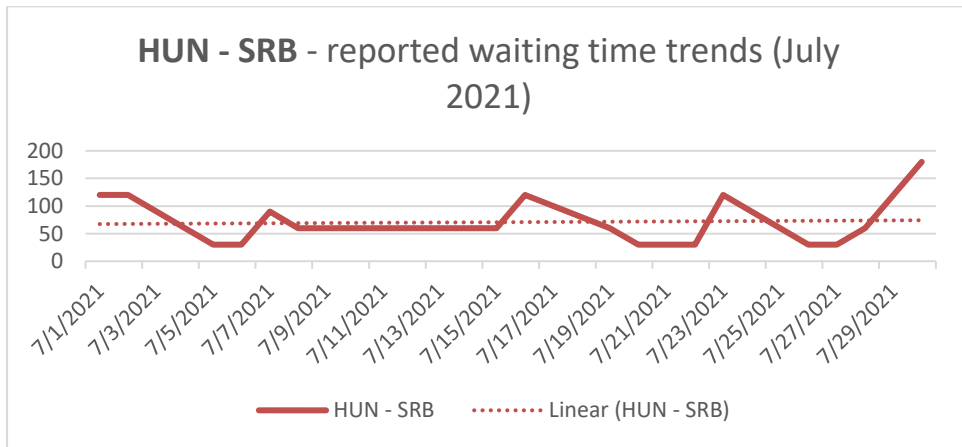
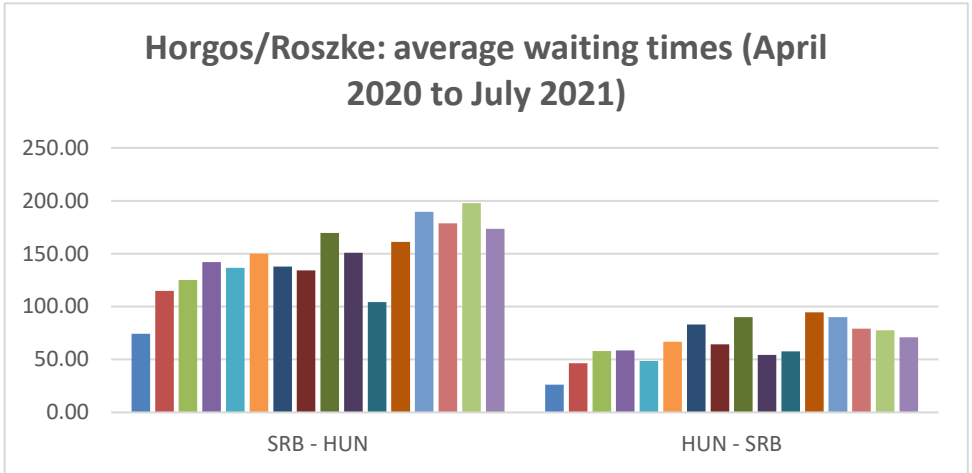
WB6 – EU borders – Inbound/Outbound waiting times distribution range (April 2020 to July 2021)



Additional details on individual Border Crossing Points are being also provided below.

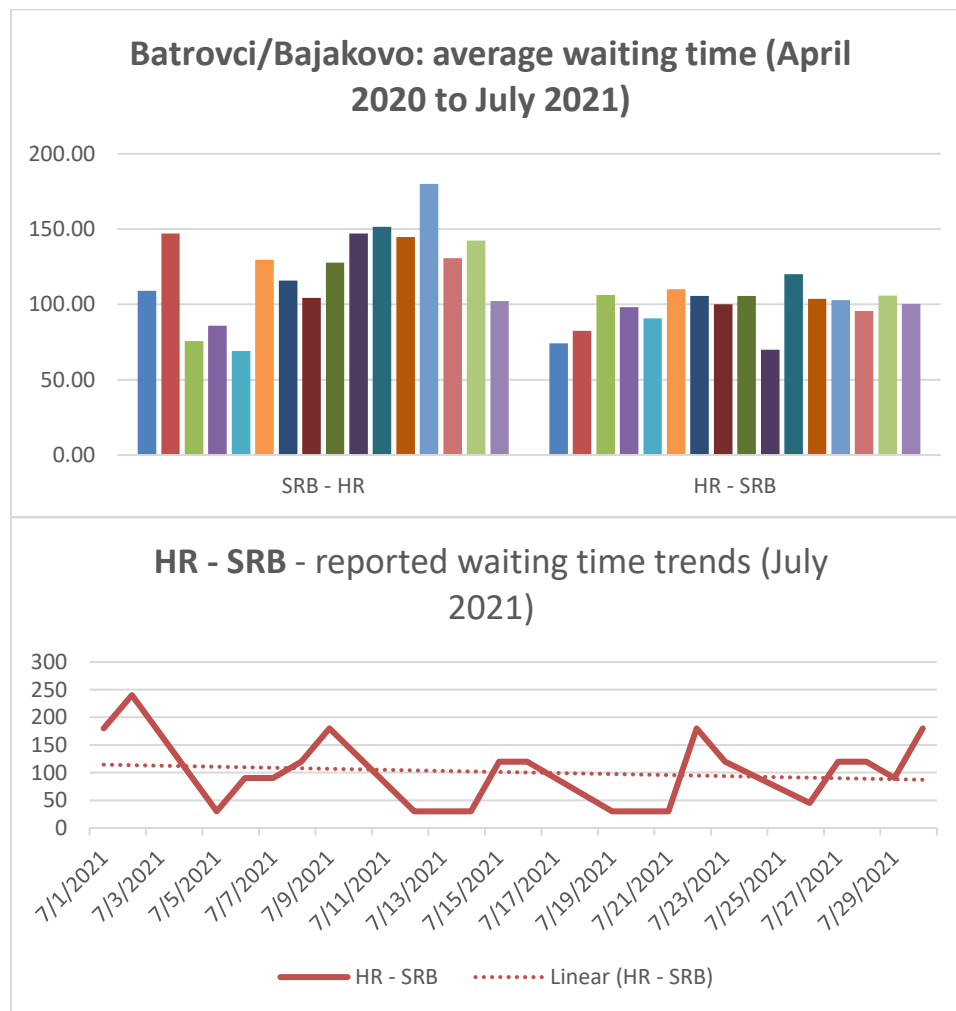
1. Horgos/Roszke

Midsummer month brought improvements on both directions. After hitting new record in June, waiting times on SRB-HUN direction decreased at the lowest level in 3 months' time, remaining, however, above average. On the opposite side, idle times decreased for the fourth month in a row. Weekly patterns remained stable, with peak values on HUN-SRB direction being registered just before weekend. Variations on SRB-HUN were more significant, longest waiting times (up to 5h) being noticed in mid July. Overall, the monthly trendline was rather stable on both directions.



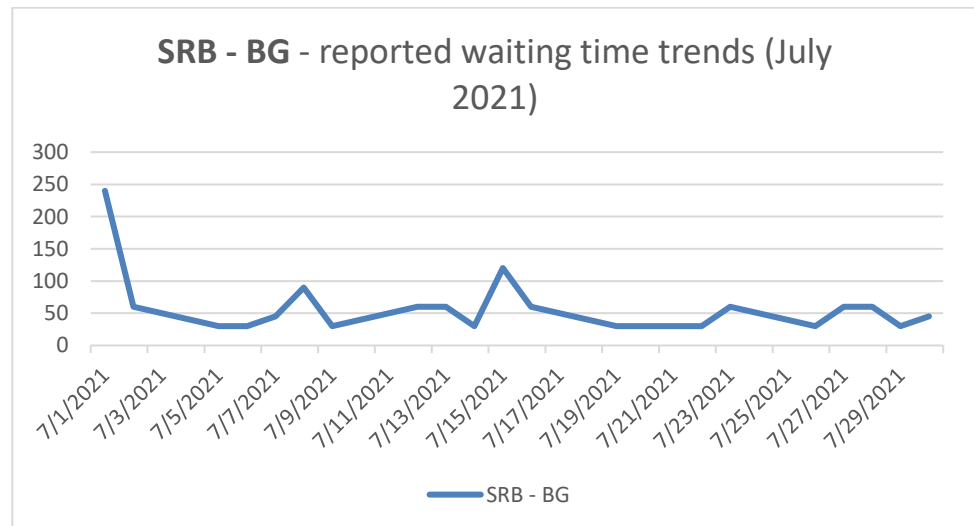
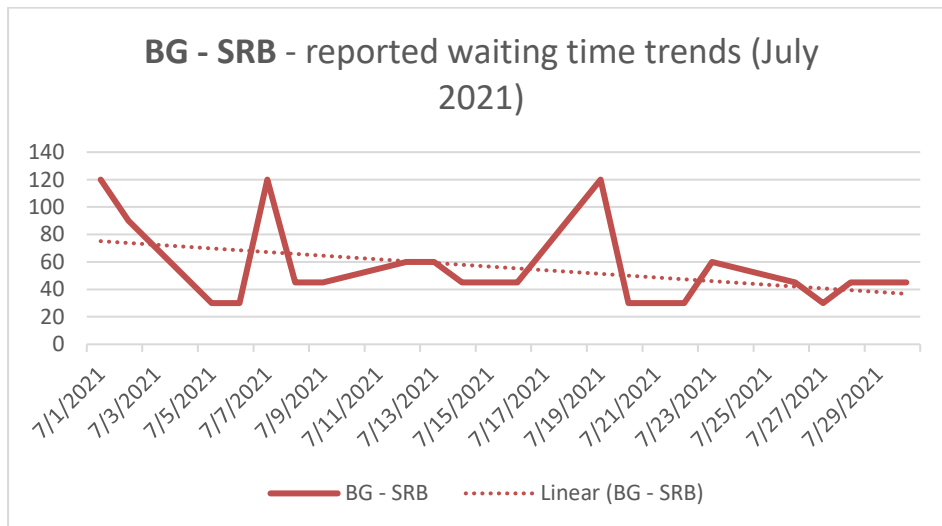
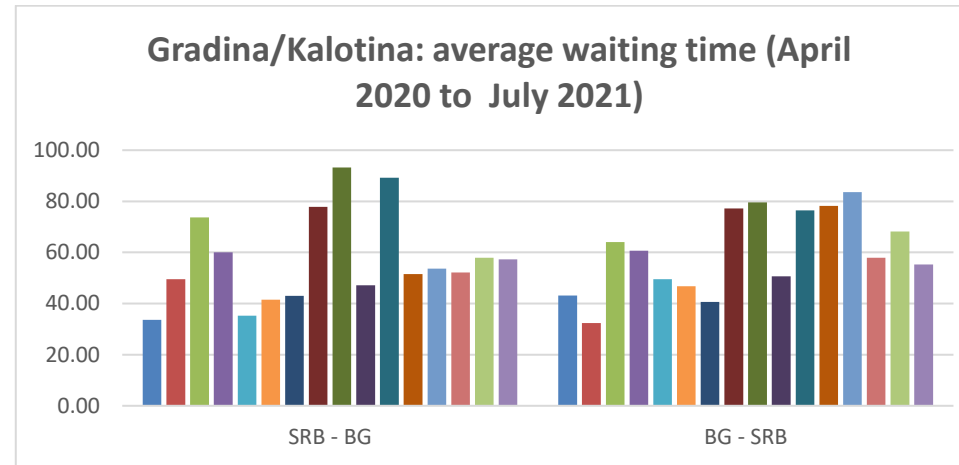
2. Batrovci/Bajakovo

During the month of July, waiting times shrank on both directions. The improvement was particularly significant on SRB-HR direction where waiting times were the lowest in 11 months' time. On HR-SRB direction, idle times remained close to average. The monthly trend was sharply decreasing from peak values of up to 4h waiting in the first half of July to idle times close to and even below 1h. On HR-SRB direction, waiting times were more uniformly distributed across the month with peak values being registered just before the weekends.



3. Gradina /Kalotina

The month of July brought decreasing waiting times in both directions (but more apparent on BG-SRB), remaining close to the overall average. The monthly trendline was also moving downwards on both sides. On SRB-BG direction, waiting times plummeted from an early July peak of 4h, remaining close to 1 h for the rest of the month. Peak values were more uniformly distributed on BG-SRB direction, with waiting times up to 2h alternating with free-flow periods.



An overview of the other BCPs under monitoring with higher risk of prolonged waiting times is presented in the graphics below. Situation in Gradiska/Stara Gradiska seems to have stabilized, while Bosanski Samac/Slavonski Samac experienced the highest recorded average waiting time on HR-BiH direction since the beginning of the monitoring exercise.

