

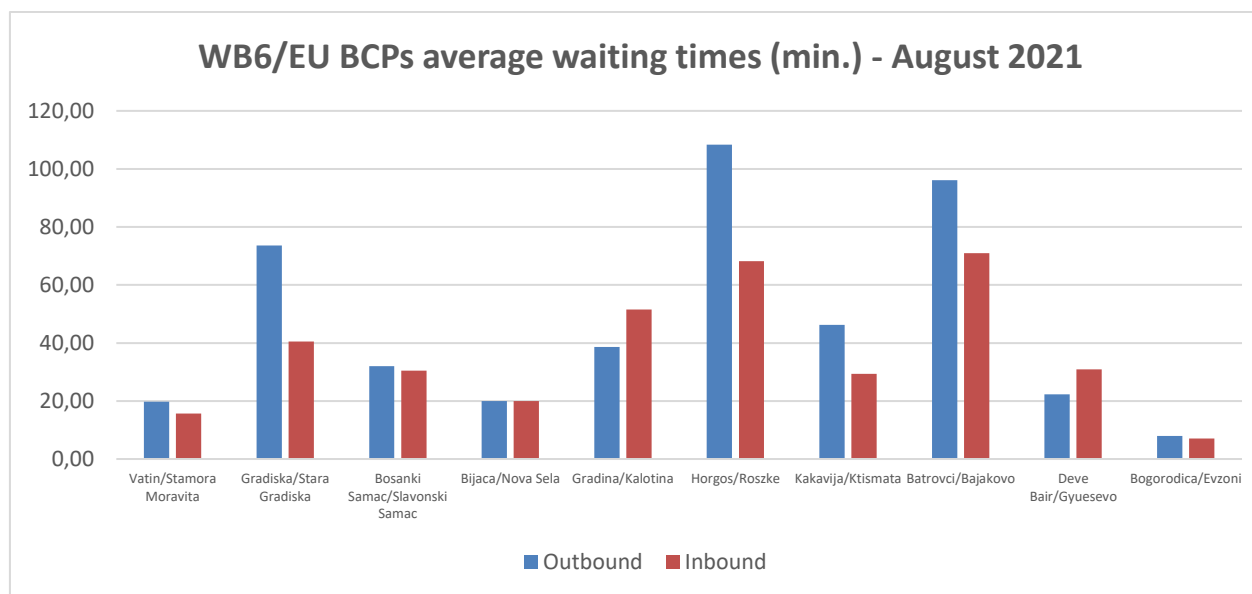
Monitoring waiting time at WB6 - EU borders (August 2021)

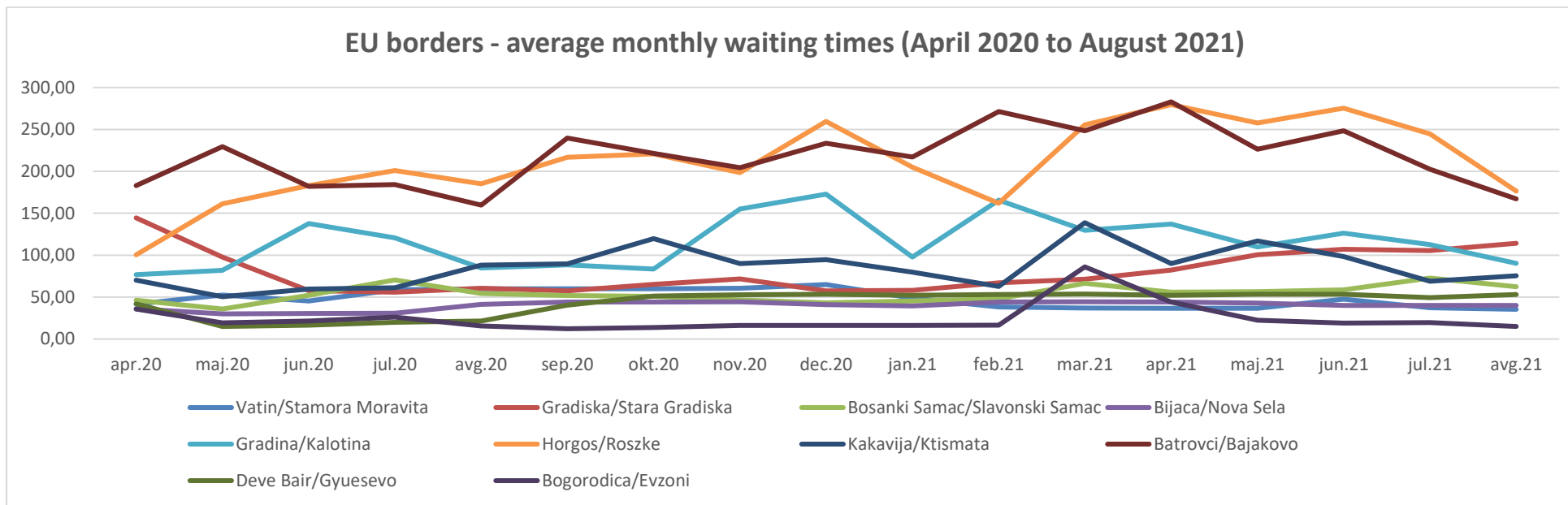
Consolidated monthly data and trends

Since the adoption of the Green Corridors/Lanes Joint proposal prepared by TCT Permanent Secretariat and CEFTA Secretariat to facilitate the transport and trade of essential goods within the Western Balkans, TCT Permanent Secretariat have been monitoring the freight transport border waiting times in close cooperation with the relevant authorities and making use of all available information sources.

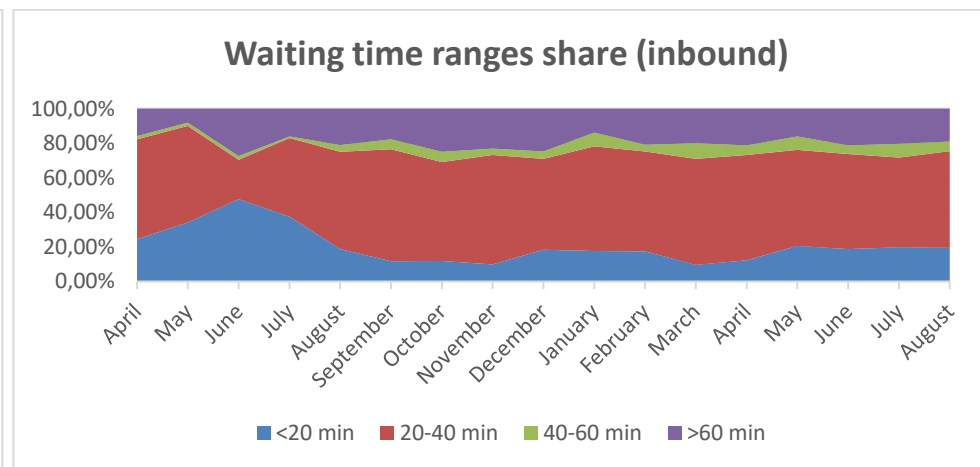
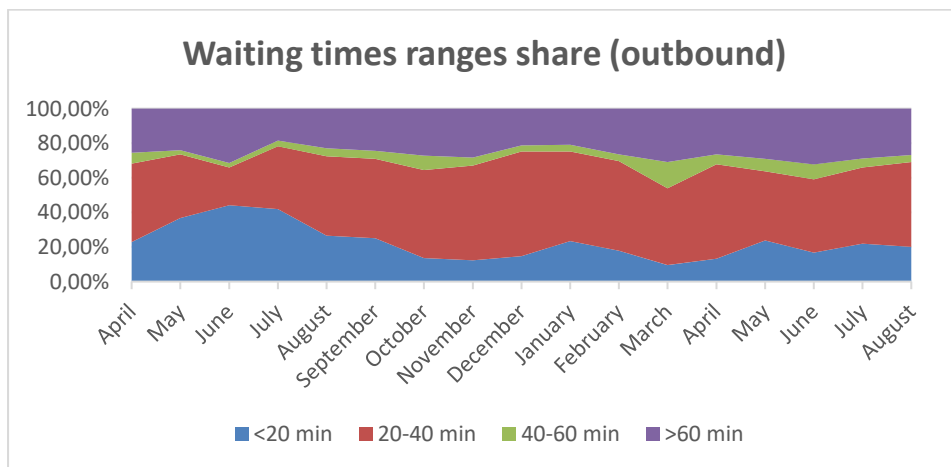
An overall picture of the WB6/EU borders waiting times during the month of August is being provided below.

Border Crossing Point	Average waiting time (August 2021)	
	Outbound	Inbound
Vatin/Stamora Moravita	19.77	15.68
Gradiska/Stara Gradiska	73.64	40.45
Bosanki Samac/Slavonski Samac	32.05	30.45
Bijaca/Nova Sela	20.00	20.00
Gradina/Kalotina	38.64	51.59
Horgos/Roszke	108.41	68.18
Kakavija/Ktismata	46.27	29.32
Batrovci/Bajakovo	96.14	70.91
Deve Bair/Gyuesevo	22.27	30.91
Bogorodica/Evzoni	7.95	7.05





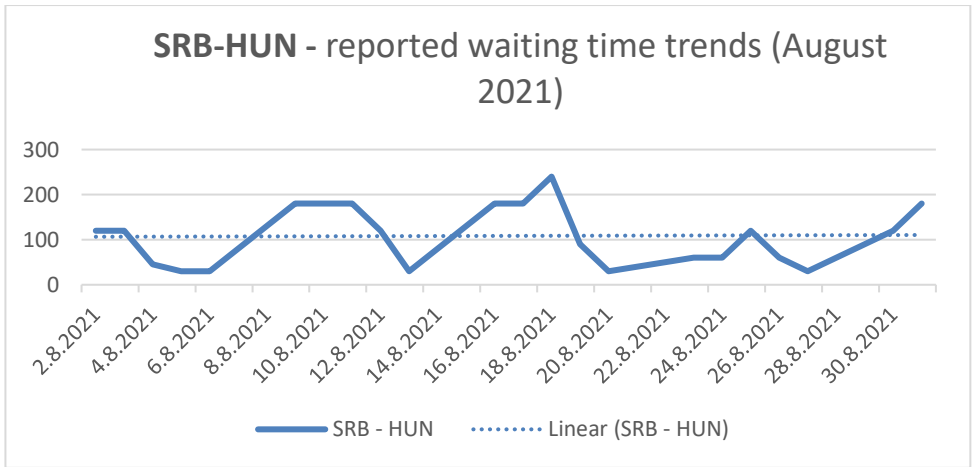
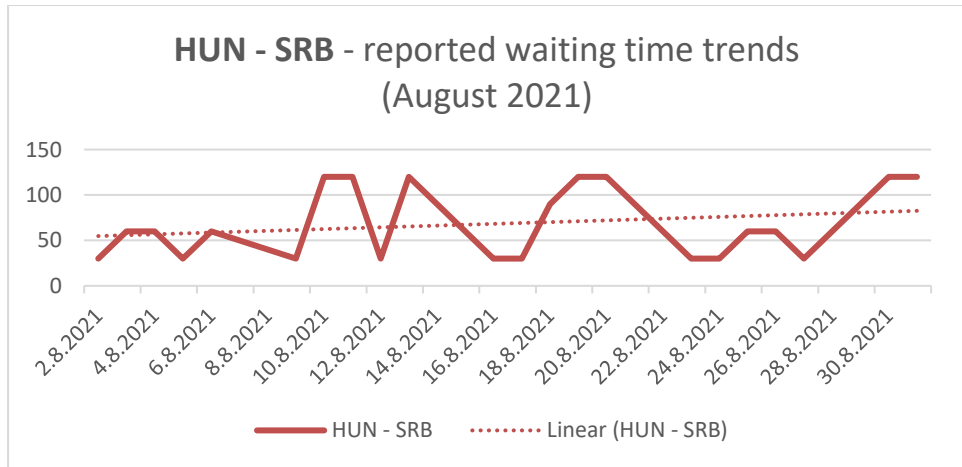
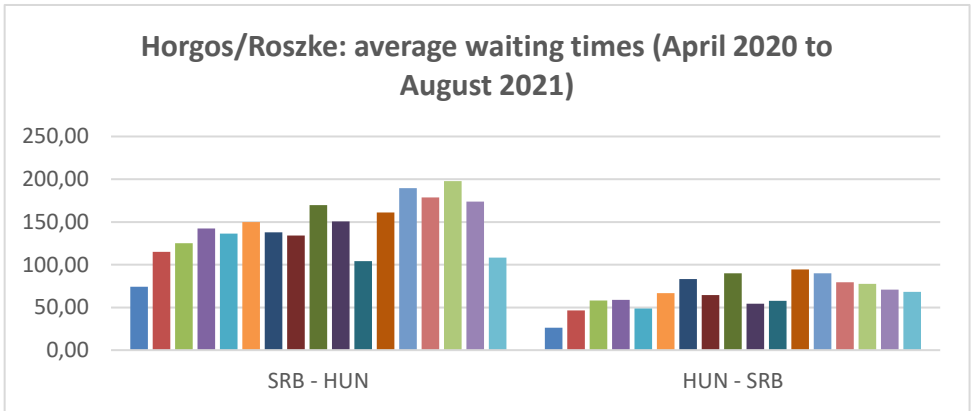
WB6 – EU borders – Inbound/Outbound waiting times distribution range (April 2020 to August 2021)



Additional details on individual Border Crossing Points are being also provided below.

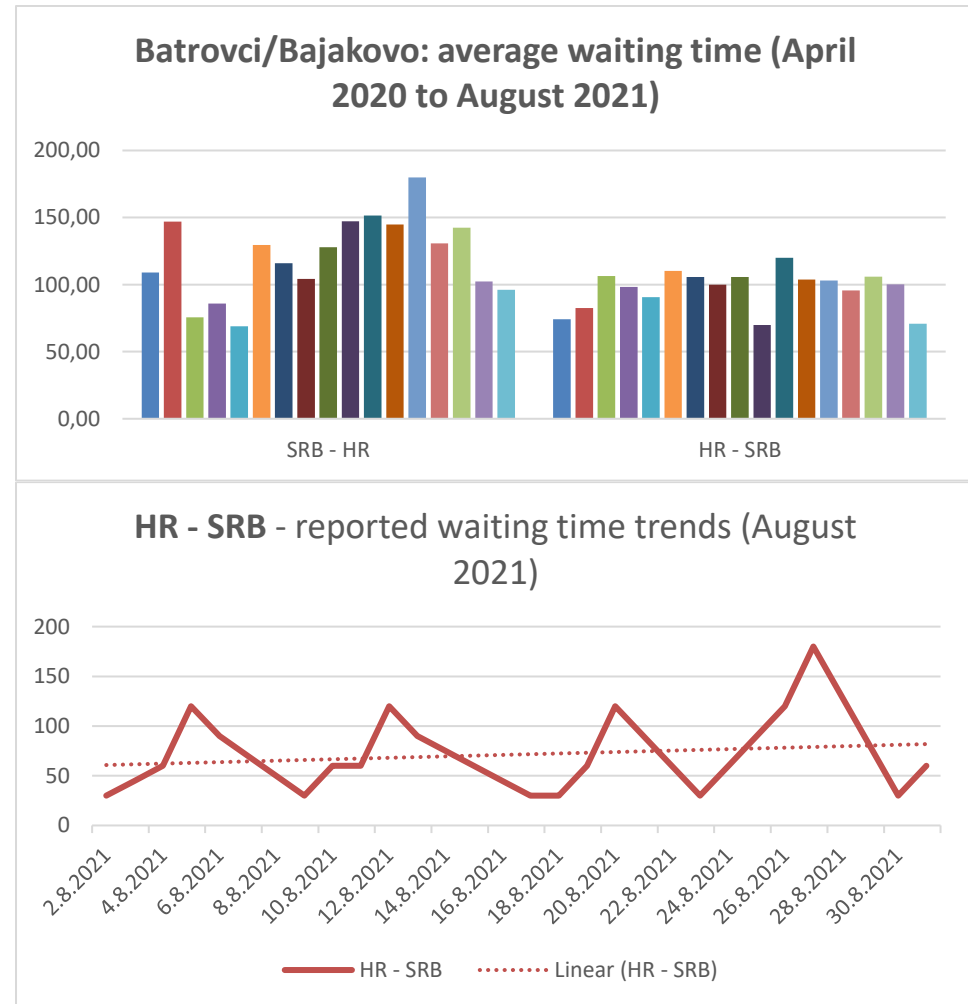
1. Horgos/Roszke

Summer improvement gained momentum in August. Waiting times were decreasing sharply, especially on SRB-HUN direction coming close to the all-time minimum. Weekly waiting times distribution shifted from usual pattern, peak values being unevenly distributed from Monday to Friday. The busiest period was around mid-month, with waiting times exceeding 3 hours on SRB-HUN direction and reaching 2 hours on the opposite side. The monthly trendline was rather stable on SRB-HUN direction but had an increasing pace on HUN-SRB.



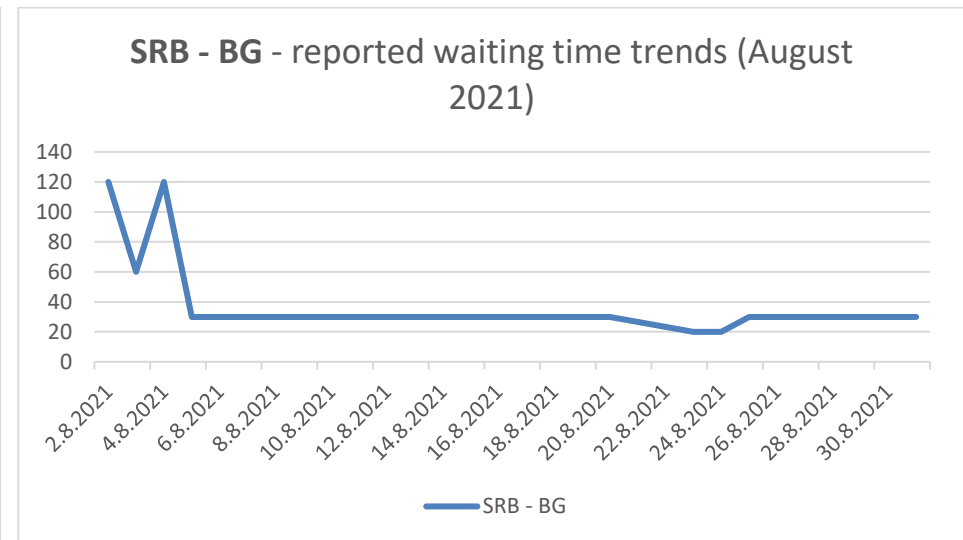
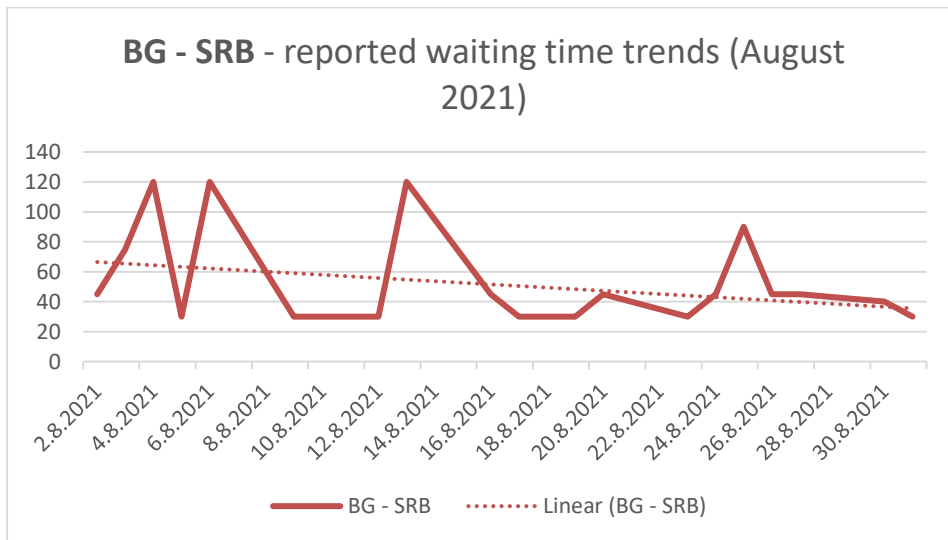
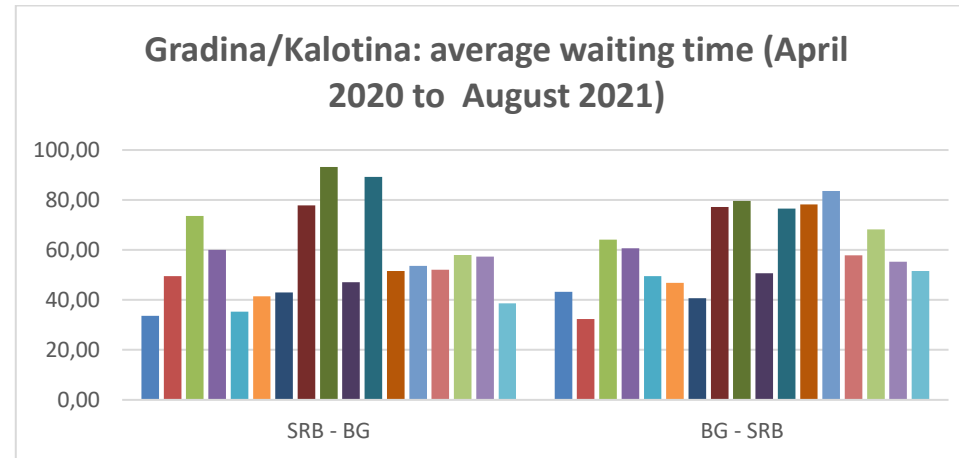
2. Batrovci/Bajakovo

Just like in Horgos/Roszke, Batrovci/Bajakovo kept improving on both directions coming close to the all-time lows. On SRB-HR direction, previous 2021 record low was marginally exceed, while on SRB-HR August average waiting time was second best in 17 months. Monthly trendline stayed on a descending pace on SRB-HR direction but was increasing on HR-SRB side because of peak waiting times in late August. Weekly patterns were again confirmed, with highest values being registered just before the weekends on HR-SRB direction.



3. Gradina /Kalotina

Gradina/Kalotina went also better in August, especially on SRB-BG direction. The monthly trendline was moving downwards on both sides. On SRB-BG direction, waiting times plummeted from an early August peak of 2h, remaining close to 30 minutes for the rest of the month. BG-SRB direction was more crowded, with waiting times up to 2h during the first half of the month, alternating with free-flow periods.



An overview of the other BCPs under monitoring with higher risk of prolonged waiting times is presented in the graphics below. Unlike most of the BCPs under monitoring, Gradiska/Stara Gradiska turned worse, with record high waiting time on BiH-HR direction. Bosanski Samac/Slavonski Samac and Kakavija/Ktismata remained mostly stable.

