


TomTom's global data and data services ready to support road safety innovations



Mile Milkovski
Partner Development Coordinator

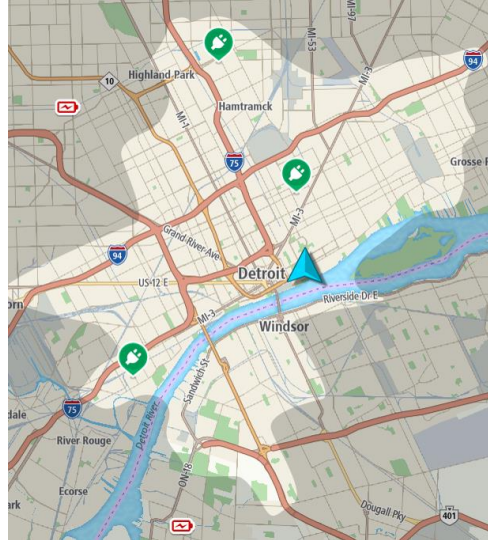
9th Meeting of Technical Committee on Road Safety

March 2022



Our vision

We believe in a future with safer roads,
free of congestion and emissions.



Our mission

Our mission is to develop innovative location technologies that make this vision a reality.



**Uniquely positioned
to solve the world's
mobility challenges**

29 years of map-making expertise

Proprietary and innovative technologies

Making the lives of drivers easier

Put safety and security above all else

Independent

**The leading
independent
location
technology
specialist**



Highly accurate maps



Navigation software



Real-time traffic and services

Disrupting mobility **since 1991**

Strong foundation...

for shaping the future of mobility



Founded



Launched first
navigation
software



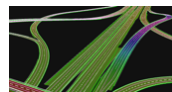
Introduced
the portable
navigation
device



Acquired
HD Traffic
technology



Acquired mapping
company,
Tele Atlas



Launched
TomTom HD Map
for AD



Acquired
autonomous
driving company,
Autonomos



Launched
AutoStream
and MotionQ





139+ MILLION
points of interest



517+ MILLION
address points



600+ MILLION
connected data sources



3+ MILLION KM
driven by mobile
mapping vehicles
each year

Maps like no other

Navigable maps for

164 35


countries

territories

69+

million km of
navigable roads
globally

Making it happen around the world

A light gray world map with red dots indicating office locations. The dots are concentrated in Europe, particularly in the Netherlands and Germany, with smaller clusters in North America, South America, Africa, Asia, and Australia.

Headquartered in Amsterdam,
with offices around the globe.

Shaping mobility **with and for our customers**

Automotive

Car manufacturers and Tier 1 vendors



Enterprise

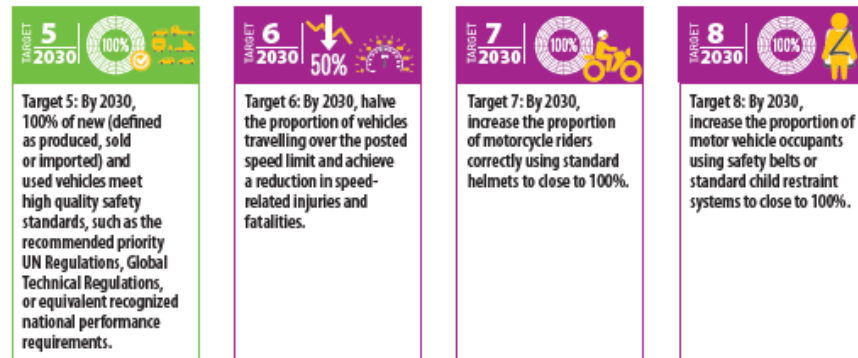
Application developers, internet-of-things [companies](#), governments, logistics services and fleet management experts, and cloud service providers



Consumer

Drivers





Pillar 1: Road safety management
 Pillar 2: Safer roads and mobility
 Pillar 3: Safe vehicles
 Pillar 4: Safe road users
 Pillar 5: Post-crash response

DECADE OF ACTION FOR ROAD SAFETY



2021 - 2030

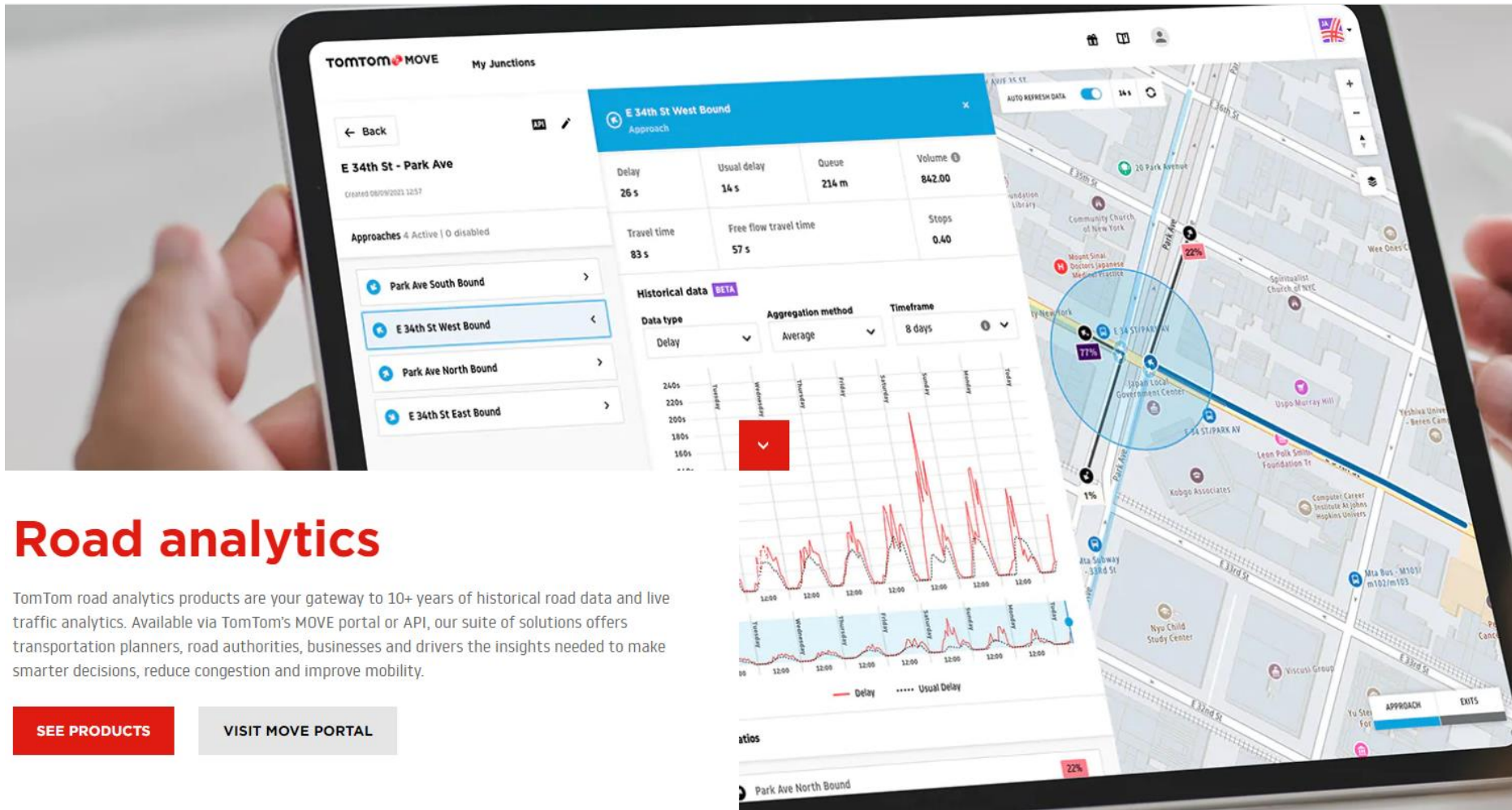


World Health Organization



PARTNERSHIPS FOR 2030 IMPACT

iRAP's Plan for the 2nd Decade of Action for Road Safety 2021-2030
FOR A WORLD FREE OF HIGH-RISK ROADS



Road analytics

TomTom road analytics products are your gateway to 10+ years of historical road data and live traffic analytics. Available via TomTom's MOVE portal or API, our suite of solutions offers transportation planners, road authorities, businesses and drivers the insights needed to make smarter decisions, reduce congestion and improve mobility.

[SEE PRODUCTS](#)[VISIT MOVE PORTAL](#)

75% Roads Travelled Scope for Serbia

THE SUM OF **KILOMETERS** OF THE ROADS THAT
CONCENTRATE 75% OF TRAVELS IS: **5.050 KM**

THE **PERCENTAGE** OF ROADS NEEDED TO BE
UPGRADE TO REACH THE **ROAD SAFETY** RATING
TARGETS OF 75% IS: **8.6%**



MOBILE MAPPING

#TOMTOMCAR

3+

MILLION KMS

Driven by mobile mapping
vehicles each year

The combination of 2 DGPS antennas,
inertial sensors and the odometer ensure
highly accurate positioning

The Ladybug 5 collects
3.8 billion pixels per km
that are used to validate real-world changes

Velodyne lidar collects
700,000 data points per second
delivering AD accuracy to within 2 cm

internal computer processes
1 terabyte of data daily

TomTom 

Mobile Mapping

Why TomTom?



+ 20 years experience in collecting images and point cloud sensor data



Global Mobile Mapping fleet equipped with latest and greatest sensors/cameras

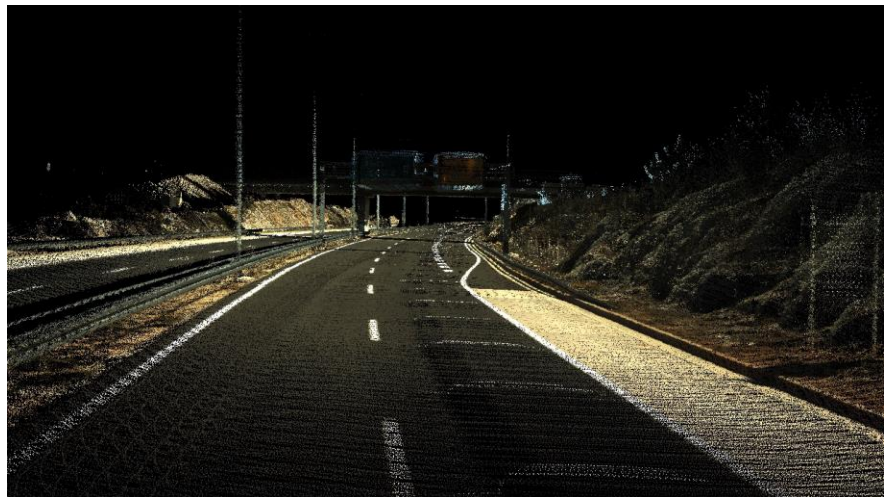
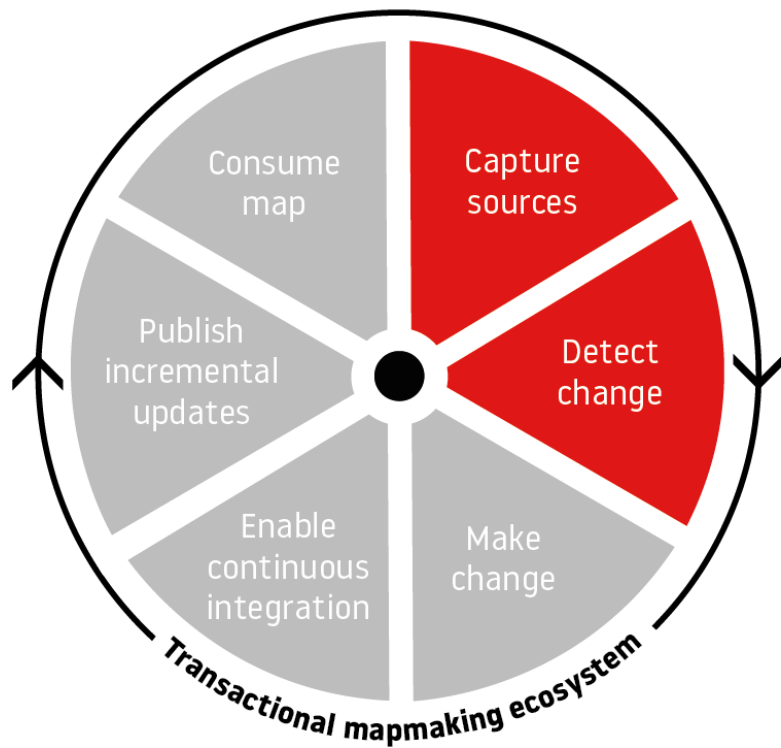


Data coverage TOP 4 road classes
City coverage



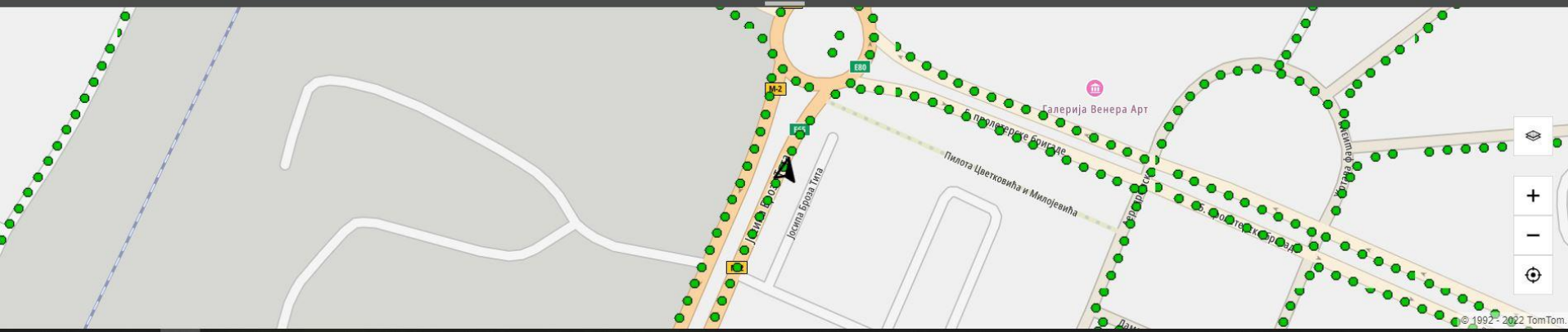
Local expert teams

Data Use Cases



Data Use Cases

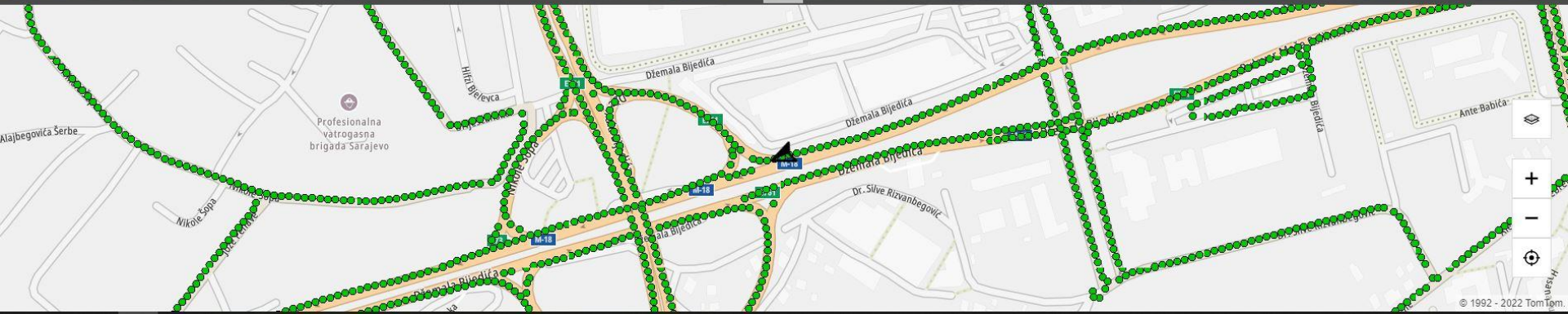
< Josipa Broza Tita
Josipa Broza Tita, Podgorica, 81101, MNE



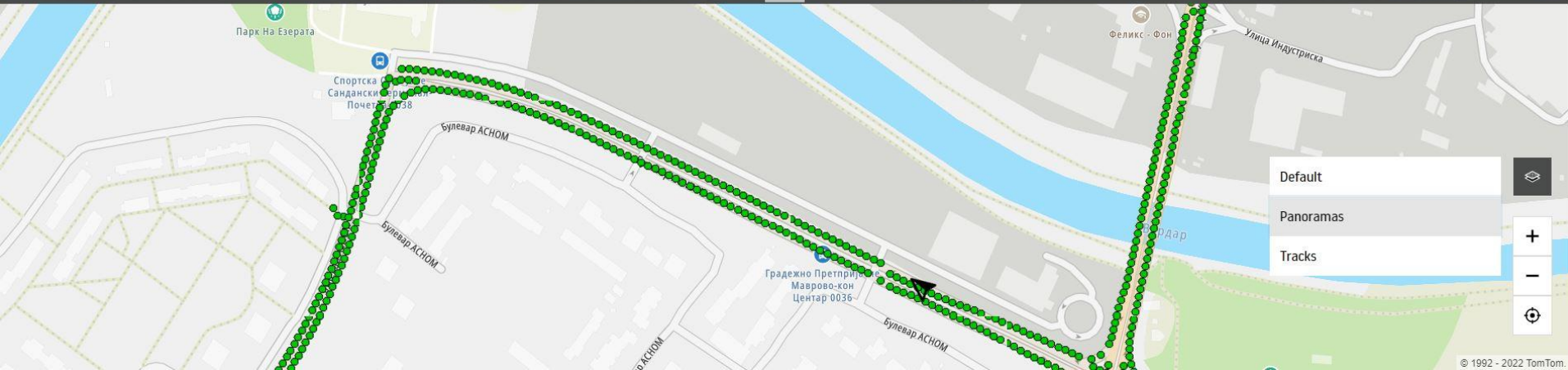
Data Use Cases



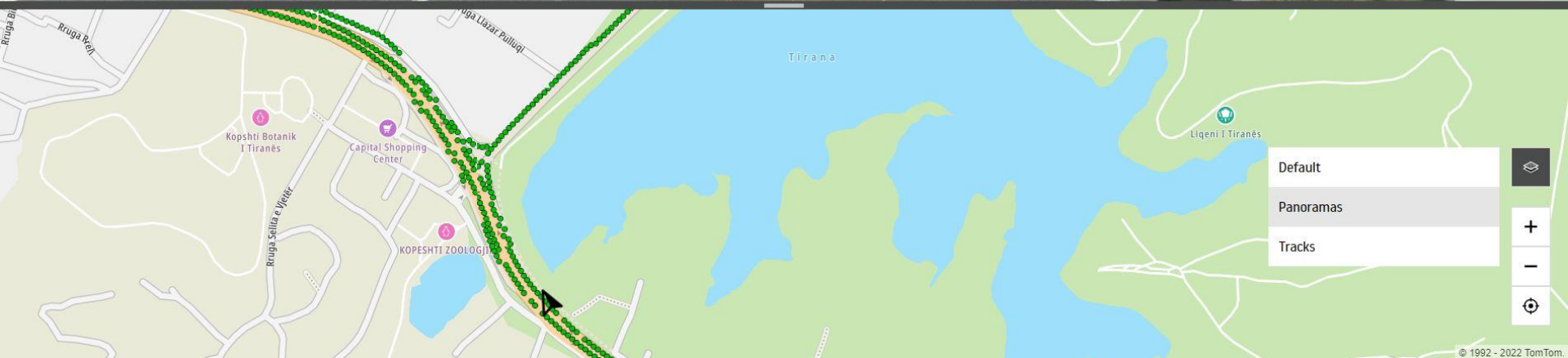
Data Use Cases



Data Use Cases



Data Use Cases



MaaS

What TomTom Provides?



Delivering access
to rich global
and local geographic
information



High-definition
feature-rich 360°
panorama images
and point cloud
sensor data



MoMa Application
Programming
Interface (API)

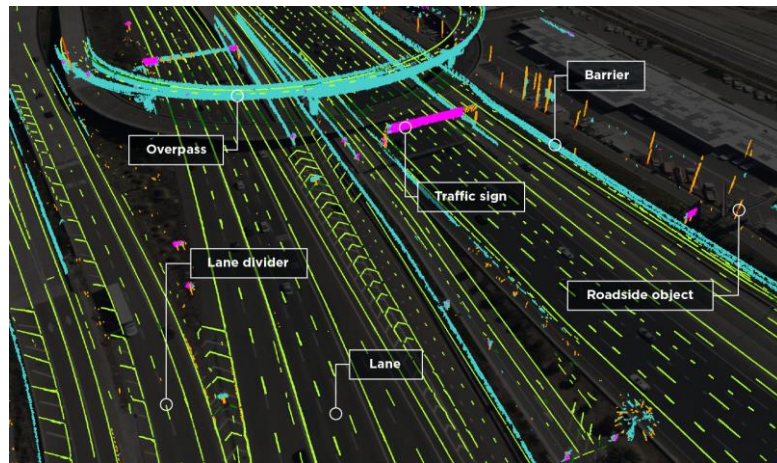


Archive or
on-demand data
collection

iRAP accreditation

First Accredited Inspection System for LIDAR

Nov 17, 2021 | AiRAP, General, News



Anditi's **Roadviewer** is the 16th iRAP accredited inspection system and the first in the world that allows users to code Star Rating attributes based on 3D mobile LiDAR data.

RoadViewer uses existing data captured by TomTom as part of its global mobile mapping (MoMa) programme, gathering some 3 million kilometres of new data per year in over 60 countries.

THANK YOU

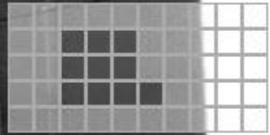
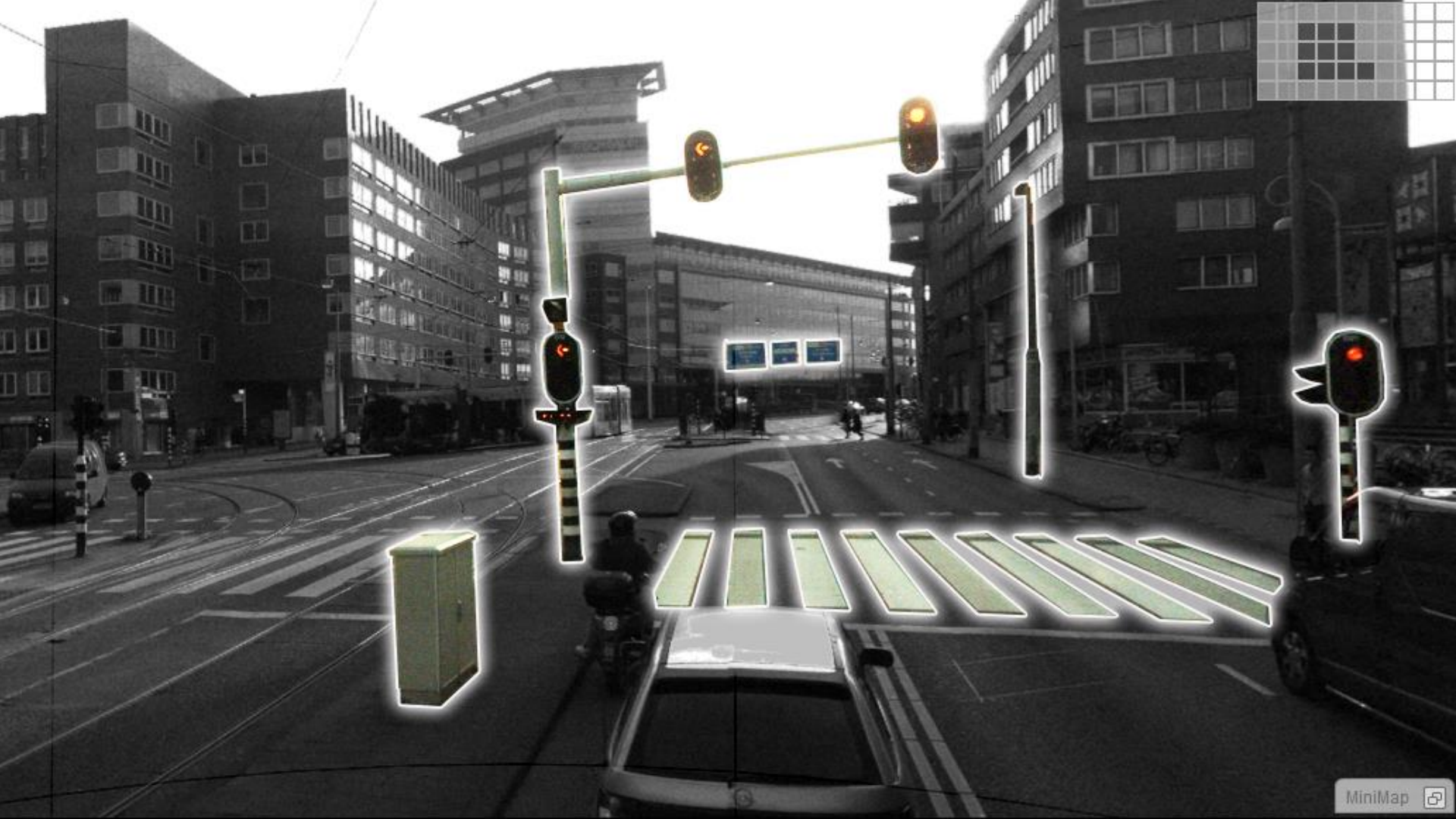
Contact: bart.volckaert@tomtom.com
mile.milkovski@tomtom.com

TOMTOM 

Feature extraction: examples







MoMa data coverage – Western Balkan

